

**PROFESSIONALS PREFER POWERWELD**

**QUALITY  
WELDING,  
SAFETY AND  
INDUSTRIAL  
SUPPLIES**

**POWERWELD®**

QUALITY WELDING, SAFETY & INDUSTRIAL SUPPLIES SINCE 1983

# TABLE OF CONTENTS



DESCRIPTION	PAGE
-------------	------

## GAS WELDING PRODUCTS

Oxy-Acetylene Heavy Duty Outfits	4
Oxy-Acetylene Medium Duty Outfits	5
Tote-A-Torch Kit	6
Regulators Light, Medium & Heavy Duty, Nitrogen Regulators	7
Flowmeters	8
Welding & Cutting Torches	9
Cutting Tips	10
Welding & Heating Tips	11
Pressure Gauges, Balloon Fillers	12
Hose Single, Twin, Argon, Air	13
Torch & Regulator Flash Arrestors	14
Propane Auto Ignite Torch, Regulator, Hose, Weed Burner	15
Air Acetylene Equipment	16
Cylinder Carts, Welded & Boxed	17
Hose Reels, Retractable & Manual	18
Hose Repair Kits, Circle Burner, Hose Clamp Pincers, Tip Cleaners & Drill Kit, Cylinder Caps, Cylinder Wrenches,	19

## ARC WELDING PRODUCTS

Electrode Holders, Ground Clamps	20
Cable Lugs, Chipping Hammers	21
Specialized Ground Clamps	22
Cable Connectors	23
Gouging Torches, Carbons	24
RK4000 Replacement Parts	25
Welding Cable	26
MIG Welder Carts	27

## FILLER METAL PRODUCTS

Tungsten Electrodes	28
Mild Steel Wire, Copper Free Wire, TIGRods, E70C Wire	29
Flux Cored Wire	30
Mild Steel & Low Hydrogen Electrodes	31
Stainless Steel, MIG / TIG Wire, Electrodes	32
Aluminum Alloys, MIG, TIG, Solder	33
Copper Based Alloys, Flux Coated, Silicon & Bare Bronze, Deoxidized Copper	34

## CHEMICAL PRODUCTS

Anti-Spatter, Nozzle Dip, Zinc Galv Spray, Coolant, NDT	35
Silver Brazing Flux, Lube Pads & Lubricant	36

# TABLE OF CONTENTS

DESCRIPTION

PAGE

## SAFETY PRODUCTS

Auto Darkening Helmets Professional & Deluxe Series	37
Auto Darkening Helmets Professional & Expert Series	38
Digital Arc Master	39
Passive Filter Helmets, Pipeline Helmets	40
Economy Welding Helmets & Helmet Accessories	41
Welding & Cutting Goggles, Cover Goggles	42
Filter & Cover Plates	43
Magnifiers, Auto Darkening Cartridges	44
Replacement Visors, Universal, Fibre Metal Style	45
Sweat Bands, Faceshield Headgear, Auto Darkening Cover Lens, Gold Filter Plates	46
Welding Gloves, TIG Gloves, Work Gloves, Drivers Gloves	47
Premium MIG & TIG Gloves, Mechanics Gloves	48
Welding Curtains, Frames	49
Leather Welding Clothing, Welding Jackets, Aprons, Sleeves	50
FR Cotton Welding Clothing	51
HI-VIZ Safety Jackets	52
Welding & Fire Blankets	53
Standard Welder's Kit, Helmet Bag, Back Hand Pads	54
Expert Welder's Kit, Duffle Bag	55

## TOOLS & ACCESSORIES

Fillet Gauges	56
Locking Pliers	57
Cable Hitch, Nozzle Reamer, Battery Clamps, Tungsten & Torch Holders	58
Magnets, Switchable Magnets	59
Spool Adaptor, TIG Kits, Welding Table, TIG Feeder, Pliers, Soapstone Holders	60
Soapstone Crayons, Wire Brushes, Cable Cutter, Files	61
Pipe Stands, Roller Heads	62
C & F Clamps, Digital Thermometers	63
Rap Arouds, Cable Covers, Pipe Wedges	64
Extension Cords, Electrode Oven	65
Butane Torch, Gas Flow Tester, Gas Saver, Lighter	66
Cup Wheels, Stringer Bead Wheels, End Brushes	67
Reflex Abrasives, Electrode & TIG Rod Canisters	68
Inspection Mirrors, Portable Welding Booth	69
Tungsten Electrode Sharpener Corded & Cordless	70
Pipe Tools, Flange Pins, Centering Heads, Radius Markers, Level	71
Pipe Tools, Flange Aligner, Burning Guide, Dial & Level, Wrap Arouds	72
Pipe Welding Clamps, TIG Torch Adaptors, Welding Umbrella	73
Line Card OEM Manufacturers Page 1	74
Line Card OEM Manufacturers Page 2	75

**POWERWELD®**



# OXY-ACETYLENE OUTFITS

## METALMASTER™

PROFESSIONAL HEAVY DUTY  
WELDING AND CUTTING OUTFITS

**TWO YEAR WARRANTY**

**MM-V & MM-H  
VICTOR® STYLE  
HARRIS® STYLE**

Cuts up to 3/4" or 8" with optional cutting tips.  
Welds up to 1/2" - 3" with optional welding tips.  
Heavy duty combination torch, regulator set and accessories housed in a quality stainless steel and metal carrying case for convenient storage.



### VICTOR® STYLE OUTFIT

Outfit Model	Torch Handle	Cutting Attach	Regulators		Cutting Tips	Welding Tips	Heating Tips	Welding Hose	Capacity	
			Oxy	Acet					Welding Up to	Cutting Up to
MM-V	PW315	PW2460	PWORMD	PWARMD	1-1-101	1-W	-	15 FT	3"	8"

### HARRIS® STYLE OUTFIT

Outfit Model	Torch Handle	Cutting Attach	Regulators		Cutting Tips	Welding Tips	Heating Tips	Welding Hose	Capacity	
			Oxy	Acet					Welding Up to	Cutting Up to
MM-H	HC231	HC232	PWORMD	PWARMD	6290-1	23A90-1	-	15 FT	1/2"	5"

## CONSISTS OF



PW2460  
VICTOR®



PW315  
VICTOR®



HC232  
HARRIS®



HC231  
HARRIS®



PWORMD



PWARMD

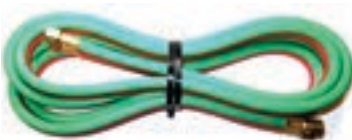


1-W



1-1-101

6290-1



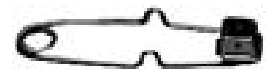
PW14-15



23A90-1



R60



3001

HARRIS® is a registered trademark of The Lincoln Electric Company. VICTOR® is a registered trademark of Esab Welding and Cutting Products. Powerweld is in no way affiliated with these original equipment manufacturers.

# OXY-ACETYLENE OUTFITS



## PROFESSIONAL MEDIUM DUTY WELDING AND CUTTING OUTFIT

### CAPACITY

Cutting up to 6" (150mm)  
Welding up to 3/8" (9mm) steel

### FEATURES

Brass & stainless steel construction  
torch handle with two stainless steel  
needle valves for fast accurate flame  
adjustment.  
O-ring seals.  
Forged and extruded brass for durability.  
External torch mounted reverse flow  
check valves.  
Complete accessory package, hose,  
lighter & goggles.

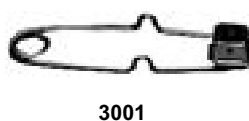
### APPLICATIONS

Precise welding, brazing, soldering,  
hard facing, heat/treating and priming,  
straightening, deseaming and scarfing,  
gouging, flame cleaning, rivet washing  
and cutting.

Outfit Model	Torch Handle	Cutting Attach	Regulators		Cutting Tips	Welding Tips	Check Valves	Welding Hose	Capacity	
			Oxy	Acet					Welding Up to	Cutting Up to
PWVKITMD	PW100	PW1350	PWORMD	PWARMD	0-3-101	0-W-1	CV20/21	12 FT	3/8"	6"

### CONSISTS OF

- PWORMD Oxygen Regulator
- PWARMD Acetylene Regulator
- PW100 Welding Torch
- PW1350 Cutting Attachment
- 3-101 Cutting Tip Size #0
- W-1 Welding Tip Size #0
- CV20R/CV21L Check Valve Set
- PW14-12 Twin Welding Hose
- R1165 Welding Goggles
- 3001 Flint Lighter



# OXY-ACETYLENE OUTFITS

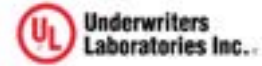
## TOTE-A-TORCH KIT



Contains all the equipment you need for cutting, welding and brazing anywhere in a rugged plastic carrying case.

Cuts up to 6" (150mm) and welds up to 3/8" (9mm)

9/16"-18 "B" Connections



### TOTE-A-TORCH KIT

MODEL	STYLE
PTK	W/O CYLINDERS

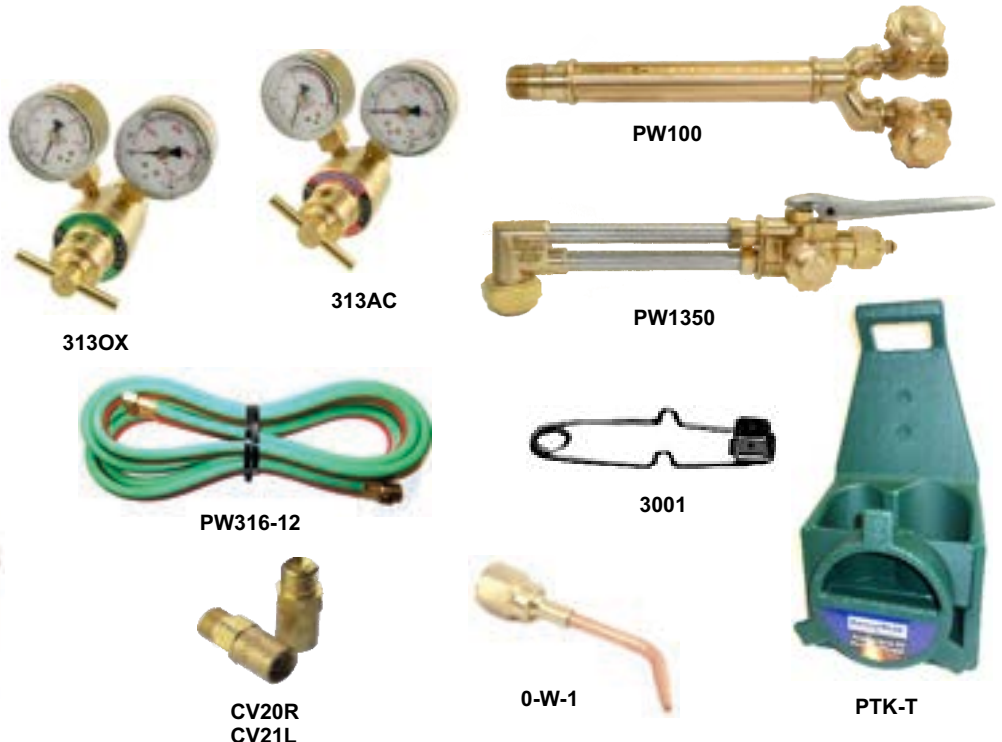
### TOTE-A-TORCH KIT

MODEL	STYLE
PTK-C	OX-20 OXY CYL / AC-10 ACET CYL

TORCH HANDLE	CUTTING ATTACHMENT	CUTTING TIP	WELDING TIP	SINGLE STAGE OXYGEN REGULATOR	SINGLE STAGE ACETYLENE REGULATOR	CHECK VALVE	ACCESSORIES
PW100 	PW1350 	0-3-101	0-W-1	313OX 	313AC 	CV20R CV21L	GOGGLES, STRIKER, 12.5' TWIN HOSE, & CARRYING CASE

## CONSISTS OF

- 313OX Oxygen Regulator
- 313AC Acetylene Regulator
- PW100 Welding Torch
- PW1350 Cutting Attachment
- 3-101 Cutting Tip Size #0
- W-1 Welding Tip Size #0
- CV20R/CV21L Check Valve Set
- PW316-12 Twin Welding Hose
- R600 Welding Goggles
- 3001 Flint Lighter
- PTK-T Carry Tote



# OXYGEN & ACETYLENE & NITROGEN REGULATORS

## MEDIUM DUTY



### PWORMD Oxygen

- Maximum inlet pressure 3000 PSI
- Delivery pressure 5-100 PSI
- 2.5" gauges
- CGA-540 inlet connection
- 9/16" - 18RH (M) outlet connection



### PWARM D Acetylene

- Maximum inlet pressure 400 PSI
- Delivery pressure 2-15 PSI
- 2.5" Gauges
- CGA-510 inlet connection
- 9/16" - 18LH (M) outlet connection



### PWPRMD Propane

- Maximum inlet pressure 400 PSI
- Delivery pressure 2-40 PSI
- 2.5" Gauges
- CGA-510 inlet connection
- 9/16" - 18LH (M) outlet connection



### OR25 Oxygen

- Maximum inlet pressure 3000 PSI
- Delivery pressure 5-100 PSI
- 2.5" gauges
- CGA-540 inlet connection
- 9/16" - 18RH (M) outlet connection



### AR25 Acetylene

- Maximum inlet pressure 400 PSI
- Delivery pressure 2-15 PSI
- 2.5" Gauges
- CGA-510 inlet connection
- 9/16" - 18LH (M) outlet connection



### OR-VM Oxygen

- Maximum inlet pressure 3000 PSI.
- Delivery pressure 5-100 PSI
- 2" gauges
- CGA-540 inlet connection
- 9/16" - 18RH (M) outlet connection



### AR-VM Acetylene

- Maximum inlet pressure 400 PSI
- Delivery pressure 2-15 PSI
- 2" Gauges
- CGA-510 inlet connection
- 9/16" - 18LH (M) outlet connection

## LIGHT DUTY



### 3130X Oxygen Rear Entry

- Maximum inlet pressure 3000 PSI
- Delivery pressure 5-80 PSI
- 1.5" Gauges
- CGA-540 inlet connection
- 9/16" - 18RH (M) outlet connection



### 313AC Acetylene Rear Entry

- Maximum inlet pressure 400 PSI
  - Delivery pressure 2-15 PSI
  - 1.5" Gauges
  - CGA-200 inlet connection
  - 9/16" - 18LH (M) outlet connection
- 313AC-B** CGA-520 inlet connection

## NITROGEN REGULATORS



### WT-304-210M Nitrogen

- High Pressure Regulator
  - 2" gauges
  - Delivery pressure range 200 - 3000 PSI
  - 9/16" - 18RH (M) outlet connection
  - CGA-580 Inlet connection
- WT-304-210M-OX** CGA-540 inlet



### PWNR450F Nitrogen Purging Regulator

- Single-stage design
- 2" gauges for easy reading
- Designed for nitrogen gas service
- CGA-580 inlet connection
- 1/4" SAE flare outlet connection
- 3000 PSI maximum inlet pressure
- 450 PSI maximum delivery pressure

## HEAVY DUTY

### OR400 Oxygen

- Maximum inlet pressure 3000 PSI
- Delivery pressure 5-100 PSI
- 2.5" Gauges
- CGA-540 inlet connection
- 9/16" - 18RH (M) outlet connection



### AR410 Acetylene

- Maximum inlet pressure 400 PSI
- Delivery pressure 2-15 PSI
- 2.5" Gauges
- CGA-510 inlet connection
- 9/16" - 18LH (M) outlet connection

# FLOWMETER REGULATORS



## 100FL-AR60H Argon

- Maximum inlet pressure 3000 PSI
- Outlet pressure preset 50 PSI
- 1.5" - 4000 PSI gauge
- 0-60 SCFH
- CGA-580 Inlet connection
- 5/8" - 18RH(F) outlet connection
- c/w 10' Argon single hose.



## 101A Argon

- Maximum inlet pressure 3000 PSI
- Outlet pressure preset 50 PSI
- 2" - 4000 PSI Gauge
- 0-60 Flowmeter (SCFH)
- CGA-580 inlet connection
- 5/8" - 18RH (F) outlet connection



## R14 Argon

- Maximum inlet pressure 3000 PSI
- Outlet flow 0 - 30 SCFH
- 2" Gauges
- CGA-580 inlet connection
- 5/8" - 18RH (F) outlet connection



## PWAGFG Argon

- Maximum inlet pressure 3000 PSI
- Outlet flow 0 - 30 SCFH
- 2" Gauges
- CGA-580 inlet connection
- 5/8" - 18RH (F) outlet connection



## PWAGFL Argon

- Economy Argon Regulator - Flowmeter
- For light duty MIG and TIG applications
- Compact design
- CGA-580 for Argon or mixed gases
- Flow 0 - 60 CFH
- 5/8" - 18RH (F) outlet connection



## PW1400AR Argon

- Maximum inlet pressure 3000 PSI
- Outlet pressure preset 50 PSI
- 1.5" - 4000 PSI gauge
- 0-60 SCFH
- CGA-580 Inlet connection
- 5/8" - 18RH(F) outlet connection



## PW1400CD Co2

- Maximum inlet pressure 3000 PSI
- Outlet pressure preset 50 PSI
- 1.5" - 4000 PSI gauge
- 0-60 SCFH
- CGA-320 Inlet connection
- 5/8" - 18RH(F) outlet connection



## PW195FM Inert Gas

- Maximum inlet pressure 50 PSI
- Flowmeter 0-60 SCFH
- 5/8" - 18RH(F) outlet connection
- 1/4" NPT (M) inlet connection.



## PW195AR-680 Argon

- Maximum inlet pressure 5500 PSI
- Outlet pressure preset at 50 PSI
- 2" - 6000 PSI Gauge
- 0-60 Flowmeter (SCFH)
- CGA-680 inlet connection
- 5/8" - 18RH (F) outlet connection



## 101C Carbon Dioxide

- Maximum inlet pressure 3000 PSI
- Outlet pressure preset 50 PSI
- 2" - 4000 PSI Gauge
- 0-60 Flowmeter (SCFH)
- CGA-320 inlet connection
- 5/8" - 18RH (F) outlet connection



## R15 Carbon Dioxide

- Maximum inlet pressure 3000 PSI
- Outlet flow 0 - 30 SCFH
- 2" Gauges
- CGA-320 inlet connection
- 5/8" - 18RH (F) outlet connection



## PW196AR Argon

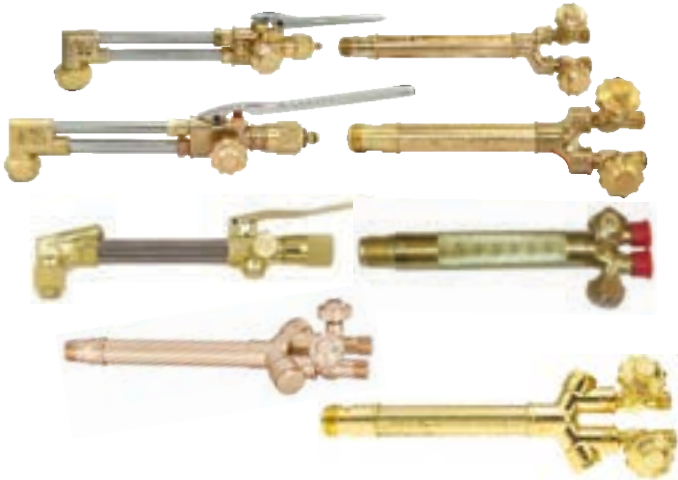
- Maximum inlet pressure 3000 PSI
- Outlet pressure preset 50 PSI
- 2" - 4000 PSI Gauge
- Dual 0-60 Flowmeters (SCFH)
- CGA-580 inlet connection
- 5/8" - 18RH (F) outlet connection



## PW198CD Heated CO2 Flowmeter

- 110v Built in Heater
- Outlet pressure preset 50 PSI
- 2" - 4000 PSI Gauge
- 0-60 SCFH
- CGA-320 Inlet Connection
- 5/8" - 18RH (F) outlet connection

## COMBINATION TORCHES



MODEL	STYLE	DESCRIPTION
PW100	VICTOR® 100	MEDIUM DUTY WELDING TORCH
PW1350	VICTOR® 1350	MEDIUM DUTY CUTTING ATTACHMENT
PW315	VICTOR® 315	HEAVY DUTY WELDING TORCH
PW2460	VICTOR® 2460	HEAVY DUTY CUTTING ATTACHMENT
HC231	HARRIS® 63-2	HEAVY DUTY WELDING TORCH
HC232	HARRIS® 73-2	HEAVY DUTY CUTTING ATTACHMENT

MODEL	STYLE	DESCRIPTION
PW100FC	VICTOR® 100FC	MEDIUM DUTY WELDING TORCH WITH BUILT IN FLASH ARRESTORS
PW315FC	VICTOR® 315FC	HEAVY DUTY WELDING TORCH WITH BUILT IN FLASH ARRESTORS

## CUTTING TORCHES



MODEL	STYLE	DESCRIPTION
PW62-3E	HARRIS®	CUTTING TORCH 18" ACET 90D
PW62-3E-180	HARRIS®	CUTTING TORCH 18" ACET 180D
PW62-3E-36	HARRIS®	CUTTING TORCH 36" ACET 90D
PW62-3E-36-180	HARRIS®	CUTTING TORCH 36" ACET 180D
PW62-3E-36-70	HARRIS®	CUTTING TORCH 36" ACET 70D
PW62-3E-48	HARRIS®	CUTTING TORCH 48" ACET 90D
PW62-3E-48-180	HARRIS®	CUTTING TORCH 48" ACET 180D
PW62-3E-48-70	HARRIS®	CUTTING TORCH 48" ACET 70D
PW62-3E-70	HARRIS®	CUTTING TORCH 18" ACET 70D
PW62-3F	HARRIS®	CUTTING TORCH 18" FG 90D
PW62-3F-180	HARRIS®	CUTTING TORCH 18" FG 180D
PW62-3F-36	HARRIS®	CUTTING TORCH 36" FG 90D
PW62-3F-36-180	HARRIS®	CUTTING TORCH 36" FG 180D
PW62-3F-36-70	HARRIS®	CUTTING TORCH 36" FG 70D
PW62-3F-48	HARRIS®	CUTTING TORCH 48" FG 90D
PW62-3F-48-180	HARRIS®	CUTTING TORCH 48" FG 180D
PW62-3F-48-70	HARRIS®	CUTTING TORCH 48" FG 70D
PW62-3F-70	HARRIS®	CUTTING TORCH 18" FG 70D
PW1600	VICTOR®	CUTTING TORCH 21" VICTOR STYLE
PW1600-36	VICTOR®	CUTTING TORCH 36" VICTOR STYLE
PW1600-48	VICTOR®	CUTTING TORCH 48" VICTOR STYLE
PW1600-70	VICTOR®	CUTTING TORCH 21" 70 DEGREE
PW419	AIRCO®	CUTTING TORCH 19" AIRCO STYLE

HARRIS® is a registered trademark of The Lincoln Electric Company. VICTOR® is a registered trademark of Esab Welding and Cutting Products. Powerweld is in no way affiliated with these original equipment manufacturers.

# CUTTING TIPS

**Powerweld** tips are precision machined from high quality copper alloys for durability. The gas passages for single piece acetylene tips are accurately swage-forged and shaped on polished mandrels for smooth, efficient gas flow. Two piece tips for alternate fuel gases feature an internal spline configuration that is of the latest design, offering the optimum in cutting performance. All tips are 100% flame tested.



HARRIS® STYLE		
MODEL	SIZES	FUEL GAS
6290	000 - 6	Acetylene
629VVC	000 - 6	Propane/Nat Gas
6290NX	5/0 - 6	Propane/Nat Gas
6290NFF	000 - 6	Propane/Nat Gas



VICTOR® STYLE		
MODEL	SIZES	FUEL GAS
1-101	000 - 8	Acetylene
3-101	000 - 8	Acetylene
GPN	000 - 8	Propane/Nat Gas
3GPN	000 - 6	Propane/Nat Gas
GPM	000 - 6	Mapp Gas
1-118	0 - 8	Acetylene



AIRCO® STYLE		
MODEL	SIZES	FUEL GAS
183	6 - 12	Acetylene



PUROX® STYLE		
MODEL	SIZES	FUEL GAS
4202	2-13	Acetylene
4213L	3-10	Propane



AIRCO® / LIQUID AIR® STYLE		
MODEL	SIZES	FUEL GAS
144 / 802	00 - 8	Acetylene
164 / 803	00 - 8	Acetylene
261	00-6	Propane/Nat Gas
AFS	72-38	Mapp Gas



SMITH® STYLE		
MODEL	SIZES	FUEL GAS
MC-12	00 - 5	Acetylene
SC-12	00 - 6	Acetylene
SC-50	00 - 6	Propane/Nat Gas

HARRIS® is a registered trademark of The Lincoln Electric Company. VICTOR® and PUROX® are registered trademarks of Esab Welding and Cutting Products. SMITH® is a registered trademark of ITW Welding. Powerweld is in no way affiliated with these original equipment manufacturers.

# WELDING & HEATING TIPS

Powerweld welding nozzles and heating tips are compatible with Powerweld and OEM manufacturers equipment. High quality copper and brass construction provide optimum performance for welding, brazing and heating applications.



VICTOR® STYLE	
MODEL	SIZES
4-MFA	Heating Tip MFA Size #4
6-MFA	Heating Tip MFA Size #6
8-MFA	Heating Tip MFA Size #8
10-MFA	Heating Tip MFA Size #10
12-MFA	Heating Tip MFA Size #12
15-MFA	Heating Tip MFA Size #15
2-MFA-1	Heating Tip MFA-1 Size #2
4-MFA-1	Heating Tip MFA-1 Size #4
6-MFA-1	Heating Tip MFA-1 Size #6
8-MFA-1	Heating Tip MFA-1 Size #8
6-MFN-1	Heating Tip MFN Size #6
8-MFN-1	Heating Tip MFN Size #8
8-MFN	Heating Tip MFN Size #8
10-MFN	Heating Tip MFN Size #10
12-MFN	Heating Tip MFN Size #12
15-MFN	Heating Tip MFN Size #15



VICTOR® STYLE	
MODEL	SIZES
000-W	W Series Size #000
00-W	W Series Size #00
0-W	W Series Size #0
1-W	W Series Size #1
2-W	W Series Size #2
3-W	W Series Size #3
4-W	W Series Size #4
5-W	W Series Size #5
6-W	W Series Size #6



HARRIS® STYLE		
MODEL	SIZES	THREAD
2290-1H	Heating Head Size #1-LPG	1/2"-25N
2290-2H	Heating Head Size #2-LPG	1/2"-25N
2290-3H	Heating Head Size #3-LPG	1/2"-25N
2290-4H	Heating Head Size #4-LPG	1/2"-25N
2290-5H	Heating Head Size #5-LPG	1/2"-25N



VICTOR® STYLE	
MODEL	SIZES
000-W-1	W-1 Series Size #000
00-W-1	W-1 Series Size #00
0-W-1	W-1 Series Size #0
1-W-1	W-1 Series Size #1
2-W-1	W-1 Series Size #2
3-W-1	W-1 Series Size #3
4-W-1	W-1 Series Size #4
5-W-1	W-1 Series Size #5
6-W-1	W-1 Series Size #6



HARRIS® STYLE		
MODEL	DESCRIPTION	THREAD
J-63-1	Harris Style Rosebuds	23/64"-26
J-63-2	Harris Style Rosebuds	23/64"-26
2393-2F	Tip Tube Elbow 28"	1/2"-25N
2393-3F	Tip Tube Elbow 16"	1/2"-25N



HARRIS® STYLE		
MODEL	SIZES	THREAD
23A90-00	Welding Tip Size #00	23/64"-26
23A90-0	Welding Tip Size #0	23/64"-26
23A90-1	Welding Tip Size #1	23/64"-26
23A90-2	Welding Tip Size #2	23/64"-26
23A90-3	Welding Tip Size #3	23/64"-26
23A90-4	Welding Tip Size #4	23/64"-26
23A90-5	Welding Tip Size #5	23/64"-26
23A90-6	Welding Tip Size #6	23/64"-26



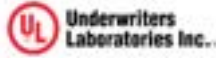
HARRIS® STYLE		
MODEL	DESCRIPTION	THREAD
E-43	Harris Style Mixer	23/64"-26
E2-43	Harris Style Mixer	1/2"-25N
D-85	Harris Style Mixer	1/2"-25N

HARRIS® is a registered trademark of The Lincoln Electric Company. VICTOR® and PUROX® are registered trademarks of Esab Welding and Cutting Products. SMITH® is a registered trademark of ITW Welding. Powerweld is in no way affiliated with these original equipment manufacturers.

# REPLACEMENT GAUGES



- Premium quality replacement gauges are the industry standard.
- Polished drawn brass with one-piece impact resistant polycarbonate posilock lens.
- For use with compressed gas regulators, these gauges are an excellent choice for original equipment and replacement applications.
- Gauges are UL listed.



DESCRIPTION			
SIZE	PSI	PART # 1/4" NPT	PART # 1/8" NPT
2 1/2"	30	A30	-
	60	A60	-
	100	A100	-
	200	A200	-
	400	A400	-
2"	4000	A4000	-
	30	B30	B30-8
	60	B60	B60-8
	100	B100	B100-8
	200	B200	B200-8
	400	B400	B400-8
	600	B600	-
	4000	B4000	B4000-8
	700	B700	-
	6000	B6000	-
30 CFH	-	R-CFH	
50 CFH	B50CFH	-	
1 1/2"	30	-	C30 / C30BM
	CONTENTS	-	CCG
	60	-	C60
	100	-	C100
	200	-	C200 / C200BM
	400	-	C400 / C400BM
4000	-	C4000 / C4000BM	
1 1/2"	COVER	LEX15	Lexan Gauge Cover
2"	COVER	LEX2	Lexan Gauge Cover
2 1/2"	COVER	LEX25	Lexan Gauge Cover

BM = Back Mount Gauge

PACKAGING: 10 per carton

# BALLOON FILLERS



## Deluxe Balloon Inflator GD92

Rugged all brass body, "Piston Type" mechanism, drilled and tapped for tie hook and string cutter. Body contains an additional 1/4" NPT port to accommodate a second filler valve if desired. Plastic hand tight CGA 580 inlet connection with sintered bronze inlet filter. 1-1/2" rear entry cylinder contents gauge. Rubber tilt valve.



### BALLOON INFLATOR

MODEL	STYLE
GD92	DELUXE

### BALLOON INFLATOR

MODEL	STYLE
GD95	MYLAR



### BALLOON INFLATOR

MODEL	STYLE
GD93	ECONOMY

### BALLOON INFLATOR

MODEL	STYLE
GD232	TILT VALVE

## Balloon Inflator Economy GD93

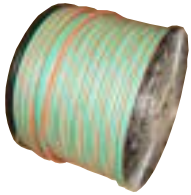
Features straight through construction, rugged brass body, "Piston Type" mechanism. Hand tight CGA 580 inlet connection with sintered bronze inlet filter. Rubber tilt valve.

## Balloon Inflator Mylar GD95

GD95 is suitable for filling standard latex and auto-fill mylar balloons. Rugged all brass body and "Piston-Type" mechanism. Drilled and tapped for a tie hook and a ribbon cutter. Automatic shut-off mylar filler to prevent over filling and bursting of expensive mylar balloon. Large plastic hand tight CGA 580 inlet connection with sintered bronze inlet filter. 1-1/2" rear entry color-coded cylinder contents gauge.

# TWIN & SINGLE HOSE

## TWIN WELDING HOSE GRADES R & T



SIZE ID	LENGTH	DESCRIPTION	GRADE R ITEM #	GRADE T ITEM #
3/16"	600' Reel	Twin Oxygen/Fuel Hose (Reels)	<b>316TR</b>	<b>316TT</b>
1/4"	600' Reel	Twin Oxygen/Fuel Hose (Reels)	<b>14TR</b>	<b>14TT</b>
5/16"	600' Reel	Twin Oxygen/Fuel Hose (Reels)	<b>516TR</b>	<b>516TT</b>
3/8"	600' Reel	Twin Oxygen/Fuel Hose (Reels)	<b>38TT</b>	

**Green hose for Oxygen**  
**Red hose for Acetylene**  
 Heat resistant EPDM tube and cover. 2 spiral polyester yarn reinforcement, more flexible than braid reinforced hose, easier to coil and handle. Conforms to RMA/CGA specifications. Working pressure 200 PSI, 1.38 Mpa



DESCRIPTION	LENGTH	GRADE R ITEM #	GRADE T ITEM #
3/16" Twin Welding Hose Assemblies	12.5'	<b>PW316-12</b>	
3/16" Twin Welding Hose Assemblies	25'	<b>PW316-25</b>	
3/16" Twin Welding Hose Assemblies	50'	<b>PW316-50</b>	
3/16" Twin Welding Hose Assemblies	100'	<b>PW316-100</b>	
1/4" Twin Welding Hose Assemblies	12.5'	<b>PW14-12</b>	
1/4" Twin Welding Hose Assemblies	25'	<b>PW14-25</b>	<b>PW14-25T</b>
1/4" Twin Welding Hose Assemblies	50'	<b>PW14-50</b>	<b>PW14-50T</b>
1/4" Twin Welding Hose Assemblies	100'	<b>PW14-100</b>	<b>PW14-100T</b>
5/16" Twin Welding Hose Assemblies	25'	<b>PW516-25</b>	<b>PW516-25T</b>
5/16" Twin Welding Hose Assemblies	50'	<b>PW516-50</b>	<b>PW516-50T</b>
5/16" Twin Welding Hose Assemblies	100'	<b>PW516-100</b>	<b>PW516-100T</b>
3/8" Twin Welding Hose Assemblies	25'		<b>PW38-25T</b>
3/8" Twin Welding Hose Assemblies	50'		<b>PW38-50T</b>
3/8" Twin Welding Hose Assemblies	100'		<b>PW38-100T</b>

### SINGLE ACETYLENE HOSE ASSEMBLY



ITEM #	DESCRIPTION
<b>AH12A</b>	3/16"X12' A-A
<b>AH12B</b>	3/16"X12' B-B
<b>AH25A</b>	3/16"X25' A-A



## SINGLE HOSE GRADE R

SIZE ID	LENGTH	DESCRIPTION	ITEM # OXYGEN	ITEM # ACETYLENE
3/16"	800' Reel	Single line hose	<b>316OX</b>	<b>316AC</b>
1/4"	800' Reel	Single line hose	<b>14OX</b>	<b>14AC</b>
5/16"	600' Reel	Single line hose	<b>516OX</b>	<b>516AC</b>
3/8"	600' Reel	Single line hose	<b>38OX</b>	<b>38AC</b>



## GREEN GP/OXYGEN HOSE

SIZE ID	LENGTH	O.D. (in.)	WORKING PRESSURE	ITEM #
1/2"	600' Reel	15/16"	300	<b>12OX</b>

## SINGLE ARGON HOSE

ITEM #	DESCRIPTION
<b>PW-AH6</b>	1/4" x 6' black inert hose assembly
<b>PW-AH10</b>	1/4" x 10' black inert hose assembly
<b>PW-AH25</b>	1/4" x 25' black inert hose assembly
<b>PW-AH50</b>	1/4" x 50' black inert hose assembly
<b>PW-AH100</b>	1/4" x 100' black inert hose assembly
<b>PW-AHBULK</b>	1/4" black inert hose bulk 800' reel

## SINGLE AIR HOSE



ITEM #	DESCRIPTION
<b>PW38A25R</b>	25' Rubber Air Hose
<b>PW38A50R</b>	50' Rubber Air Hose
<b>PW38A100R</b>	100' Rubber Air Hose

Supplied with 1/4" NPT male fittings



Pre-assembled 1/4" I.D. inert hose assemblies for MIG and TIG applications. 5/8"-18 RH male connections at each end. Maximum working pressure - 200 PSI. Available from stock in five popular lengths.

## POWERWELD TORCH & REGULATOR FLASH ARRESTORS



ITEM #	DESCRIPTION
PWFA10	Torch Set

**Powerweld Flashback Arrestors** provide essential protection for oxy-fuel welding and cutting operations. Designed to stop and extinguish dangerous gas flames travelling back toward equipment, they help prevent accidents and protect both operators and equipment. Each unit also features a built-in check valve to prevent reverse gas flow, offering a double layer of safety in a compact, easy-to-install design.

#### Models:

- **PWFA10:** torch set
- **PWFA30:** regulator set

#### Maximum Working Pressure:

- Oxygen: 145 psi
- Acetylene: 15 psi
- MPS Gas: 22 psi
- LPG, Hydrogen, Natural Gas, Methane: 50 psi

#### Key Safety Features:

- Gas non return valve (NV): prevents back flow of gas upstream of the arrestor
- Flame arrestor (FA): large sintered stainless steel element for repeatedly arresting flames
- Dust filter (DF): positioned on the inlet side
- Colour coded and clearly marked for oxygen or fuel gas
- UL Listed

#### Recommended Applications:

- Oxy fuel welding, cutting, heating, and brazing
- Welding shops, fabrication facilities, and field service work
- Applications requiring enhanced gas safety control, in accordance with ANSI 249.1 and ANSI/NFPA



ITEM #	DESCRIPTION
PWFA30	Regulator Set

# PROPANE EQUIPMENT

## AUTO IGNITE PROPANE TORCH



Self-igniting torch for use with propane or MAPP® gas. Instant on/off trigger igniter for simple one hand operation. Adjustable swirl flame control knob. Durable cast aluminum body. Lock button to maintain flame. Compatible with small disposable cylinders - CGA-600 connection.

MODEL	STYLE
PW8000T	PROPANE

## PROPANE REGULATOR

### GR-333

**HIGH PRESSURE PROPANE REGULATOR**  
 Delivery pressure adjustable from 0-30 psi  
 Inlet - CGA-510 POL connection with excess flow control  
 Outlet 9/16"-18 L.H. male "B" connection  
 Capacity 1,500,000 BTU/hr  
 Suitable for torches, construction heaters, tar pots and other industrial applications



MODEL	STYLE
GR-333	PROPANE

## PROPANE HOSE ASSEMBLIES



Factory made assemblies available in 1/4" and 3/8" I.D.  
 U.L. / C.S.A. Approved Type I  
 9/16"-18 L.H. female "B" connections on both ends  
 Temperature Range -60°F to 212°F (-51° C to 100° C)  
 Pressure rating up to 350 psi

<b>I4C120FWFW</b>	1/4" X10' B-B
<b>I4C300FWFW</b>	1/4" X25' B-B
<b>I4C600FWFW</b>	1/4" X50' B-B
<b>I6C120FWFW</b>	3/8" X10' B-B
<b>I6C300FWFW</b>	3/8" X10' B-B
<b>I6C600FWFW</b>	3/8" X50' B-B

## WEED BURNERS



MODEL	STYLE
PW-500PT	PROPANE

### PW-500PT Propane Multi-Torch

Can be used wherever a large volume of heat is needed. Uses: weed burning, drying, thawing frozen pipes and equipment, melting snow, ice, asphalt repair, removal of parking lot markings, paint removal plus many other applications. Runs on standard clean burning propane gas. Connects to standard LP cylinders - no regulator required. Torch produces 500,000 BTU of heat. Solid steel head, 30" handle and solid brass needle control valve. Included with the torch is a 10' CSA approved LPG hose assy, POL excess flow control connector, and a single flint striker. Specs: Capacity: 500,000 BTU Wt. 5.5lbs Length 37"

**PW-500PTHA** Hose assy 10' w/ pressure reducer **PW-500PT**  
**PW-500PTR** Pressure Reducer POL 9/16-18N **PW-500PT**



MODEL	STYLE
PW-501PT	PROPANE

**HEAVY DUTY** version features a cast iron and steel torch head for demanding applications.

**PWX-3B AIR ACETYLENE KIT**



**PWX-3B Kit**

The Powerweld PWX-3B air-acetylene kit is designed for professional brazing and soldering. It includes two sizes of quick-connect swirl tips for soft soldering up to 3" (7.6 cm) and silver brazing up to 1-5/8" (4.1 cm). The ergonomic torch handle features rear valve control for precision, while the adjustable "B" tank regulator with a contents gauge and 12' acetylene hose ensures reliable performance.

**PWG4 Torch**

Lightweight torch offers superior comfort and precise flame control with a rear needle valve. Its quick-disconnect system allows easy tip changes and compatibility with most similar brands.

**PWAR-B Regulator**

Adjustable acetylene regulator ensures reliable performance with CGA-520 ("B" tank) inlet fitting and a contents gauge for monitoring fuel levels.

**Powerweld Quick Connect Swirl Flame Tips**

Powerweld swirl flame tips deliver a high-precision flame for soldering and brazing. The quick-disconnect design ensures fast tip changes and compatibility with most similar brands. Available in five sizes to suit a wide range of applications.



**TIP CHART**

Tip	Soft Solder		Silver Braze	
	Inches	MM	Inches	MM
<b>PWA-3</b>	1/4 - 1	6 - 25	1/8 - 1/2	3 - 12.5
<b>PWA-5</b>	3/4 - 1-1/2	19 - 38	1/4 - 3/4	6 - 19
<b>PWA-8</b>	1 - 2	25 - 50	1/2 - 1	12.5 - 25
<b>PWA-11</b>	1-1/2 - 3	38 - 75	7/8 - 1-5/8	22 - 41
<b>PWA-14</b>	2 - 3-1/2	50 - 87.5	1 - 2	25 - 50

# CYLINDER CARTS



CC38  
6" rubber wheels  
41" H x 22" W  
Base: 8" x 15.75"  
Holds 40 cu. ft. (B)  
acetylene and 40 -80  
cu. ft. oxygen  
Side by side  
Load Capacity: 220 lbs

MODEL	CYLINDERS
CC38	SMALL



CC2-14  
14" rubber wheels  
44.5" H x 32.5" W  
Base: 13" x 25"  
Holds 145-250 cu. ft.  
acetylene and 244-330 cu.  
ft. oxygen  
Side by side  
Load Capacity: 440 lbs

MODEL	CYLINDERS
CC2-14	LARGE



CC6110  
8" rubber wheels  
44" H x 12" W  
Base: 8" x 10"  
Holds 80-330 cu. ft.  
high pressure cylinder  
Load Capacity: 110 lbs

MODEL	CYLINDERS
CC6110	SINGLE



CC4-10  
8" rubber wheels  
41" H x 26" W  
Base: 10" x 18.5"  
Holds 75-145 cu. ft.  
acetylene and 120-244  
cu. ft. oxygen  
Side by side  
Load Capacity: 285 lbs

MODEL	CYLINDERS
CC4-10	MEDIUM



CC2-16  
16" pneumatic tires  
44.5" H x 32.5" W  
Base: 13" x 25"  
Holds 145-250 cu. ft.  
acetylene and 244-330 cu.  
ft. oxygen  
Side by side  
Load Capacity: 440 lbs

MODEL	CYLINDERS
CC2-16	LARGE



CC79  
8" rubber wheels  
41" H x 26" W  
Base: 9.5" x 18"  
acetylene and 120-244  
cu. ft. oxygen  
Tandem - front to back  
Load Capacity: 285 lbs

MODEL	CYLINDERS
CC79	MEDIUM



CC2-16LFW  
16" flat free tires  
66" H x 32.5" W  
Base 13" x 23"  
Firewall with lifting eye  
Holds 145-250 cu. ft.  
acetylene and 244-330  
cu. ft. oxygen  
Load Capacity: 440 lbs

MODEL	CYLINDERS
CC2-16LFW	LARGE



CYT-6SH  
6" rubber wheels  
41" H x 22" W  
Base: 8" x 15.75"  
Holds 40 cu. ft. (B) acetylene  
and 40 -80 cu. ft. oxygen  
Side by side  
Load Capacity: 220 lbs

MODEL	CYLINDERS
CYT-6SH	SMALL



CYT-8CH  
8" rubber wheels  
41" H x 26" W  
Base: 10" x 18.5"  
Holds 75-145 cu. ft. acetylene  
and 120-244 cu. ft. oxygen  
Side by side  
Load Capacity: 285 lbs

MODEL	CYLINDERS
CYT-8CH	MEDIUM



CYT-14CH  
14" rubber wheels  
44.5" H x 32.5" W  
Base: 13" x 25"  
Holds 145-250 cu. ft.  
acetylene and 244-330 cu.  
ft. oxygen  
Side by side  
Load Capacity: 440 lbs

MODEL	CYLINDERS
CYT-14CH	LARGE



CYT-8CH-1  
8" rubber wheels  
41" H x 26" W  
Base: 9.5" x 18"  
Holds 75-145 cu. ft.  
acetylene and 120-244  
cu. ft. oxygen  
Tandem - front to back  
Load Capacity: 285 lbs

MODEL	CYLINDERS
CYT-8CH-1	MEDIUM



CYT-81CH-1  
8" rubber wheels  
44" H x 12" W  
Base: 8" x 10"  
Holds 80-330 cu. ft.  
high pressure cylinder  
Load Capacity: 110 lbs

MODEL	CYLINDERS
CYT-81CH-1	SINGLE

## WELDED CARTS

## BOXED CARTS



**EASY TO SHIP**  
**EASY TO STOCK**  
**EASY TO ASSEMBLE**

Boxed cylinder carts make sense.  
Easy to ship and easy to stock.

# RETRACTABLE HOSE REELS

## HEAVY DUTY MANUAL TWIN WELDING HOSE REEL



### MHR100

- Spring Tension Brake keeps the reel from
- "free spinning" after you've stopped pulling out the hose.
- 3' PowerWeld 1/4" Grade 'T' connector hose included
- Hose assembly not included
- Heavy-duty steel frame construction
- Corrosion resistant powder coating
- Solid brass swivel
- Mounts on any flat surface
- Working Pressure: 300PSI
- Hose Capacity 1/4" - 100'
- Reel Diameter 12-1/2"
- Reel Width 13-1/2"
- Overall Height 16"
- Weight 13 lbs
- Base Plate Size 4-1/4" x 4-1/4"

MODEL	STYLE
MHR100	MANUAL / TWIN Hose not included

## HEAVY DUTY AUTO RETRACTABLE TWIN WELDING HOSE REELS C/W HOSE



### RHR50

- Includes PowerWeld 1/4" X 50'
- Grade 'T' Hose for use with all fuel gases.
- Industrial grade steel reel
- Leak proof double O-ring seals
- Four direction non-snap rollers
- Multiple mounting positions
- Whip and hose stop
- Working Pressure: 300PSI
- Reel diameter 17"
- Reel width 4-1/2"
- Overall height 19-1/4"
- Weight 39 lbs
- Base Plate Size 6" x 6"

MODEL	STYLE
RHR50	RETRACTABLE - 50' Hose included



### RHR100

- Includes PowerWeld 1/4" X 100'
- Grade 'T' Hose for use with all fuel gases.
- Industrial grade steel reel
- Leak proof double O-ring seals
- Four direction non-snap rollers
- Multiple mounting positions
- Whip and hose stop
- Working Pressure: 300PSI
- Reel diameter 19.5"
- Reel width 5-1/2"
- Overall height 23"
- Weight 61 lbs
- Base Plate Size 7-1/8" x 5-3/4"

MODEL	STYLE
RHR100	RETRACTABLE - 100' Hose included

## HEAVY DUTY AUTO RETRACTABLE AIR HOSE REELS C/W HOSE



### AHR3850

- Auto Retractable Heavy-duty steel frame construction
- Corrosion resistant powder coating
- Spring tension brake, solid brass swivel
- Four direction non-snap rollers
- Whip and hose stop
- Mounts on flat surface - ceiling, wall, floor
- Includes: 3 feet connector pigtail hose with standard 1/4" NPTM fittings
- Working Pressure: 300PSI
- Reel Diameter: 17"
- Reel Width: 4-1/2"
- Height: 19-1/4"
- Hose Length Capacity (FT): 3/8" x 50'
- Weight 40 lbs
- Base Plate Size 8-5/8" x 5/3/4"

MODEL	STYLE
AHR3850	RETRACTABLE- AIR Hose included

## HEAVY DUTY MANUAL ARGON REEL



### MHR100-ARGON

- Spring Tension Brake keeps the reel from "free spinning" after you've stopped pulling out the hose.
- 10' Powerweld 1/4" black inert connector hose with 5/8-18" inert fittings included.
- Hose assembly not included
- Heavy-duty steel frame construction.
- Corrosion resistant powder coating.
- Solid brass swivel.
- Mounts on any flat surface.
- Working Pressure: 300PSI.
- Hose Capacity 1/4" - 200'.
- Reel Diameter 12-1/2"
- Reel Width 13-1/2"
- Overall Height 16"
- Weight 13 lbs.
- Base Plate Size 4-1/4" x 4-1/4"

MODEL	STYLE
MHR100-ARGON	MANUAL Hose not included

## HOSE REPAIR KITS



**PW-82** B-size kit for 3/16" & 1/4" ID hoses. Offers 12 different items most commonly used for hose repair. Comes complete with PW1098 pincers, and circle clamps.

MODEL	SIZE
<b>PW-82</b>	3/16", 1/4"



**PW38HRK** HOSE REPAIR KIT FOR 3/8" ID HOSE

MODEL	SIZE
<b>PW38HRK</b>	3/8"

## CIRCLE BURNER

Comes with tip holders to fit most popular cutting torch models. Cuts circles 4-1/2" to 28" in diameter



MODEL	STYLE
<b>I-69-6</b>	UNIVERSAL

## TIP CLEANERS



Use to wipe and polish the critical orifice wall of cutting tips For heavy-duty use Includes 13 stainless steel reamers and file. Comes in an aluminum case. Cleans drill sizes from 49 to 77

MODEL	STYLE
<b>TC-1</b>	STANDARD TIP CLEANER
<b>TC-4</b>	KING TIP CLEANER

## TIP DRILL KIT



MODEL	DESCRIPTION
<b>PWTDK</b>	TIP DRILL KIT



MODEL	STYLE
<b>20T</b>	PROPANE

Propane Key



MODEL	STYLE
<b>250T</b>	POL

POL Acetylene Cylinder Key

## HOSE CLAMP PINCERS



Portable and lightweight, used for pinching and removing ear clamps.

MODEL	STYLE
<b>PW1098</b>	CRIMP PLIERS

## CYLINDER CAPS



Cylinder caps for high pressure and acetylene. All cylinder caps are zinc plated to prevent rusting.

MODEL	STYLE
<b>318-11</b>	HIGH PRESSURE FINE THREAD
<b>312-11</b>	ACETYLENE FINE THREAD
<b>318-7</b>	HI-PRESSURE COARSE THREAD
<b>312-8</b>	ACETYLENE COARSE THREAD

## CYLINDER WRENCHES



MODEL	STYLE
<b>5</b>	B & MC

B & MC Tank Key Double Ended



MODEL	STYLE
<b>1013</b>	10 WAY

10-Way Cylinder Wrench  
 • For regulators, torches and cylinders  
 • Drop-forged  
 • Special alloy steel

# ELECTRODE HOLDERS

## TWIST TYPE



- Lightweight - easy to use
- Better maneuverability - great for tight places
- Excellent for vertical welding
- Grips the electrode nearer to the end
- Allows use of 20% more of the electrode

### TWIST STYLE

MODEL	AMPS
PW4B	400
PW6B	600



### REPLACEMENT HEADS

MODEL	AMPS
PWRK-4	400
PWRK-6	600

## JAW TYPE

- Made from a high copper alloy for maximum conductivity and strength
- Long top and bottom tip insulators are fibreglass to withstand intense heat and impact
- Suitable for heavy duty applications
- Oval-point screw cable connections on all models

### TWECO® STYLE

MODEL	AMPS
A532	200
A316	250
A732	300
A14	350



### LENCO® STYLE

MODEL	AMPS
RAF-200	200
RAF-250	250
RAF-300	300
RAF-350	350
RAF-500	500



## GROUND CLAMPS



### ALERCO® STYLE

MODEL	AMPS
AGC-200	200
AGC-300	300
AGC-500	500

- Manufactured from heavy-duty nickel-plated steel with forged brass conductors and braided copper strap
- Heavy-duty spring provide positive strength at jaws
- Cable is easy to install with built-in cable connector and oval point screw

### TWECO® STYLE

MODEL	AMPS
EL-200	200
EL-300	300
EL-500	500



- Manufactured from hot dip galvanized steel with forged brass conductors.
- Heavy-duty springs provide positive strength at jaws
- Braided copper strap



### LENCO® STYLE

MODEL	AMPS
GR-200	200
GR-300	300
GR-500	500

- Manufactured from high copper alloy assures excellent current carrying ability
- Large contact area
- Serrated upper and lower jaws
- Mechanical oval-point screw cable connection



### JACKSON® STYLE

MODEL	AMPS
GC-2	200
GC-3	300
GC-5	500

- Double lock clamps have forged copper alloy conductors
- High clamping pressure and long finger-grip levered handles for easy jaw opening

### TWECO® STYLE

MODEL	AMPS
GCT-200	200
GCT-300	300
GCT-500	500

- Manufactured from 98% copper alloy with forged brass conductors
- Heavy-duty fully insulated springs provide positive strength at jaws

# CABLE LUGS & SPLICERS



HAMMER ON LUG	
PART #	CABLE SIZE
RL11	SIZE 3/0 TO 4/0
RL22	SIZE 1/0 TO 2/0
RL33	SIZE 4 TO 1

- Manufactured from heavy wall cast copper alloy, annealed for maximum conductivity
- Fast, easy installation - just slide in cable and strike it with hammer for durable connection



HAMMER SPLICER	
PART #	CABLE SIZE
RS11	SIZE 3/0 TO 4/0
RS22	SIZE 1/0 TO 2/0
RS33	SIZE 4 TO 1

- Manufactured from heavy wall cast copper alloy, annealed for maximum conductivity
- Long length and flared ends make installation fast and easy



Mechanical cable splicers incorporate hex-screws for solid connection and an insulated cover for safety

MODEL	CABLE SIZE
CS-610	#4-1/0
CS-2040	2/0-4/0

SOLDER SPLICER	
PART #	CABLE SIZE
RS3040	SIZE 3/0 TO 4/0
RS1020	SIZE 1/0 TO 2/0
RS12	SIZE 4 TO 1

SOLDER LUG	
PART #	CABLE SIZE
RL3040	SIZE 3/0 TO 4/0
RL1020	SIZE 1/0 TO 2/0
RL12	SIZE 4 TO 1



- Easy to use crimping tool
- Takes any size of solder type lug
- Simply use a hammer to do the job
- Good permanent connection
- Spring return

MODEL	STYLE
RL-CRIMP	UNIVERSAL

# CHIPPING HAMMERS

## SPRING HANDLE STEEL SHAFT

- Similar to Lenco® LHC-1
- Similar to Atlas HCP
- Wire spring handle
- Drop forged heat treated head
- Welded-on head - Cannot come loose

## SPRING HANDLE STEEL SHAFT

- Most popular model
- Similar to Lenco® LH-1
- Similar to Atlas H
- Wire spring handle
- Drop forged heat treated head
- Welded-on head - Cannot come loose



CHIPPING HAMMER	
MODEL	STYLE
RLHC-1	POINT/CROSS CHISEL

CHIPPING HAMMER	
MODEL	STYLE
RLH-1	POINT/CHISEL

## WOOD HANDLE

- Similar to Lenco® LWHH
- Similar to Atlas WH-20
- Similar to Atlas WH-30
- Drop forged heat treated heads attached to handle with steel and wood wedges

CHIPPING HAMMER	
MODEL	STYLE
RLHWH-20	POINT/CHISEL
RLHWH-30	POINT/CROSS CHISEL

## WOOD HANDLE STEEL SHAFT

- Similar to Lenco® LHW-1
- Similar to Atlas J
- This model has the wood handle preferred by many welders
- Drop forged heat treated head
- Welded-on head - Cannot come loose

CHIPPING HAMMER	
MODEL	STYLE
RLHW-1	POINT/CHISEL

# SPECIALIZED GROUND CLAMPS



- Heavy duty screw type ground clamp
- Jaws are adjusted by screw lever
- Rubber insulated cable connector

SCREW TYPE	
MODEL	AMPS
GCC-600	600



- Design for MIG welding process
- Powerful bite and swivel pad
- Full 2" opening with a copper coated steel pressure screw
- Cable attaches with two oval-point screws and comes with connector insulator

"C" CLAMP TYPE	
MODEL	AMPS
ECWG60C	600



- Manufactured from nickel-plated steel with forged brass conductors
- Large contact area with strong gripping power
- Insulated to prevent annealing
- Easy installation or removal

ROTARY MAGNETIC	
MODEL	AMPS
ECM50R	500



- Manufactured from nickel-plated steel
- Large copper contact shunt
- High amperage capacity
- Handle for easy removal

ROTARY MAGNETIC	
MODEL	AMPS
ECM80H	800



- Manufactured from nickel-plated steel with forged brass conductors
- Large contact area with strong gripping power
- Insulated to prevent annealing
- Easy installation or removal
- Swivel connector for welding cable

ROTARY MAGNETIC	
MODEL	AMPS
ECM60R	600



ECR800-2



ECR1000-2

- Heavy duty forged brass construction
- Two cable connectivity for efficient grounding connection
- Outer face revolves with full swivel action
- Strong tension spring to ensure maximum connection
- Easy installation or removal

ROTARY "C" CLAMP	
MODEL	AMPS
ECR800-2	800
ECR1000-2	1000



ECR600L

- Solid Brass construction
- 600 amp capacity
- Smooth rotation
- 3 angle body positions

ROTATING CLAMP	
MODEL	AMPS
ECR600L	600

# CABLE CONNECTORS

## LENCO® STYLE

PART #	DESCRIPTION	SUITABLE FOR CABLE SIZES	PKG
LC40	Complete Connector	#1 - 4/0	50 / CS
LC40M	Male Half	#1 - 4/0	100 / CS
LC40F	Female Half	#1 - 4/0	100 / CS
LC40HD	Heavy Duty Connector	#1/0 - 4/0	50 / CS
LC10	Complete Connector	#4 - #1	50 / CS
LC10M	Male Half	#4 - #1	100 / CS
LC10F	Female Half	#4 - #1	100 / CS
LS40	Black Sleeve only	N/A	50 / CS
LS40B	Blue Sleeve only	N/A	50 / CS
LS40R	Red Sleeve only	N/A	50 / CS
LS40Y	Yellow Sleeve only	N/A	50 / CS
LC1040M	Whip Connector	#4 - #1	100 / CS

## DINSE® STYLE

PART #	DESCRIPTION	SUITABLE FOR CABLE SIZES	PKG
CCD1025	Complete Connector	#4 - #2	50 / CS
CCD1025-M	Male Half	#4 - #2	100 / CS
CCD1025-F	Female Half	#4 - #2	100 / CS
CCD3550	Complete Connector	#2 - 1/0	50 / CS
CCD3550-M	Male Half	#2 - 1/0	100 / CS
CCD3550-F	Female Half	#2 - 1/0	100 / CS
CCD5070	Complete Connector	2/0 - 4/0	50 / CS
CCD5070-M	Male Half	2/0 - 4/0	100 / CS
CCD5070-F	Female Half	2/0 - 4/0	100 / CS

## TWECO® STYLE

PART #	DESCRIPTION	SUITABLE FOR CABLE SIZES	PKG
1MBP	Complete Connector	#4 - #1	50 / CS
1MBP-M	Male Half	#4 - #1	100 / CS
1MBP-F	Female Half	#4 - #1	100 / CS
2MBP	Complete Connector	1/0 - 2/0	50 / CS
2MBP-M	Male Half	1/0 - 2/0	100 / CS
2MBP-F	Female Half	1/0 - 2/0	100 / CS
4MBP	Complete Connector	3/0 - 4/0	50 / CS
4MBP-M	Male Half	3/0 - 4/0	100 / CS
4MBP-F	Female Half	3/0 - 4/0	100 / CS

## TERMINAL CONNECTIONS

PART #	DESCRIPTION	SUITABLE FOR CONNECTOR	PKG
TE-1AF	45° Terminal	LC10	50 / CS
TE-2AF	45° Terminal	LC40	50 / CS
TE-20F	180° Terminal	LC40	50 / CS
TE-A-3595	45° Dinse	CCD3550	50 / CS
DA-5095	Adaptor - Dinse Male, LC40F		

Designed to efficiently conduct the current through a detachable type connector. Brass bodies are precision machined. Cam action design allows lock in with a twist and pulls the two halves together tightly. Connector covers are resistant to heat, cold, abrasion, ozone, oils & solvents. Tapered ends lock out moisture, oil and dirt. Connector covers are specially compounded to be flame retardant.



- Positive lock-tight action
- Brass bodies are precision machined from heavy specially shaped brass extrusion
- Cam action design of male half connector pulls the two halves together tightly
- Compatible with Lenco® and other popular style connectors



- Popular Dinse® Style connector
- Positive lock-tight action
- Brass parts are precision machined from heavy specially shaped brass extrusion
- Cam action design of male half connector pulls the two halves together tightly



- Positive lock-tight action
- Brass parts are precision machined from heavy specially shaped brass extrusion
- Cam action design of male half connector pulls the two halves together tightly
- Compatible with Tweco® and other popular style connectors



- Positive lock-tight action
- Brass parts are precision machined from heavy specially shaped brass extrusion
- Terminal connectors replace cable lugs for fixture to machines allowing for quick disconnect of cables

# GOUGING TORCH

For gouging, cutting, beveling, piercing and flushing metal. The Gouging Torch is designed to remove any kind of metal by the "Air Carbon-Arc" process which is more economical than older methods such as burning, chipping and grinding.



RK4000 GOUGING TORCH		
MODEL	AMPERAGE	CABLE ASS'Y
RK4000	1000 AMPS	7' SWIVEL CABLE

See page 24 for RK4000 replacement parts

# POINTED & FLAT GOUGING CARBONS

Used for gouging out defective welds and cutting non-ferrous metals. Consistent copper coating insulates against side burn through, offers improved conductivity. Electrodes are 12" in length.



COPPER COATED DC POINTED GOUGING CARBONS			
Item #	Packaging	Size (Inches)	Size (MM)
DC18	100 per box	1/8" X 12"	3.2mm X 305mm
DC532	100 per box	5/32" X 12"	4.0mm X 305mm
DC316	50 per box	3/16" X 12"	4.8mm X 305mm
DC14	50 per box	1/4" X 12"	6.4mm X 305mm
DC516	50 per box	5/16" X 12"	7.9mm X 305mm
DC38	50 per box	3/8" X 12"	9.5mm X 305mm
DC12	50 per box	1/2" X 12"	12.7mm X 305mm

Carton Packaging: 1/8"-5/32" Diameter - 500 per Carton - All other sizes - 250 per Carton



COPPER COATED DC FLAT GOUGING CARBONS			
Item #	Packaging	Size (Inches)	Size (MM)
DCF38532	50 per box	3/8"X5/32" X 12"	9.5mm X 4.0mm X 305mm
DCF58316	50 per box	5/8"X3/16" X 12"	15.9mm X 4.8mm X 305mm

Carton Packaging: 1/8"-5/32" Diameter - 500 per Carton - All other sizes - 250 per Carton

# JOINTED GOUGING CARBONS

- Eliminates stub loss and provides continuous electrode feed especially for semi-automatic torches
- Machined at each end to provide male and female fit up
- Used for gouging out defective welds and cutting non-ferrous metals
- Consistent copper coating insulates against side burn through, offers improved conductivity
- Electrodes are 17" in length

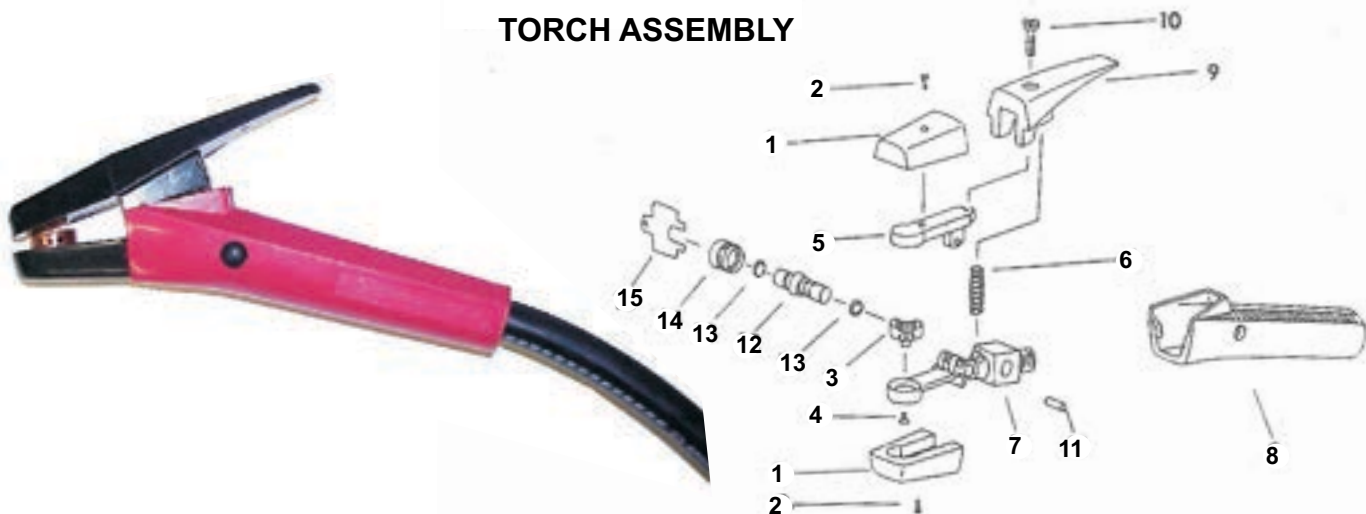


COPPER COATED DC JOINTED GOUGING CARBONS			
Item #	Packaging	Size (Inches)	Size (MM)
DCJ-38	50 per box	3/8" X 17"	9.5mm X 440mm
DCJ-12	50 per box	1/2" X 17"	12.7mm X 440mm
DCJ-58	25 per box	5/8" X 17"	15.9mm X 440mm
DCJ-34	25 per box	3/4" X 17"	19.1mm X 440mm



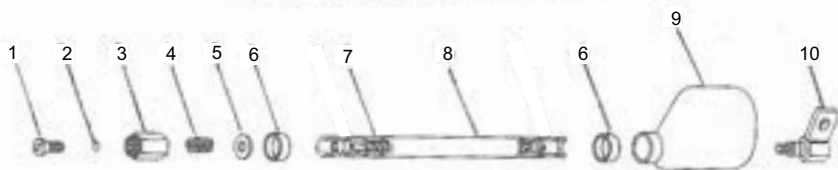
# RK4000 REPLACEMENT PARTS

## TORCH ASSEMBLY



- |    |            |                          |
|----|------------|--------------------------|
| 1  | 94-433-183 | Insulators & Screws (pr) |
| 2  | 97-142-009 | Screw for Insulators     |
| 3  | 94-378-368 | Head Assembly            |
| 4  | 97-192-022 | Screw for Head Assembly  |
| 5  | 94-048-088 | Upper Arm                |
| 6  | 94-800-077 | Spring                   |
| 7  | 94-103-206 | Body                     |
| 8  | 94-370-163 | Handle - RK4000          |
| 9  | 94-476-066 | Lever                    |
| 10 | 97-192-125 | Screw                    |
| 11 | 94-632-094 | Hinge Pin                |
| 12 | 94-801-011 | Spool with O-Rings       |
| 13 | 94-710-036 | O-Ring for Spool (pair)  |
| 14 | 94-104-012 | Bonnet                   |
| 15 | 94-960-001 | Wrench                   |

## 70-084-207 - 360° SWIVEL CONCENTRIC CABLE ASSEMBLY



- |    |            |                  |
|----|------------|------------------|
| 1  | 94-695-044 | Retainer         |
| 2  | 94-710-027 | O-Ring           |
| 3  | 94-565-087 | Male Connector   |
| 4  | 94-940-104 | Spring           |
| 5  | 94-940-103 | Flat Washer      |
| 6  | 94-167-010 | Clamp (pair)     |
| 7  | 96-130-263 | Conductor Cable  |
| 8  | 94-171-274 | Cover            |
| 9  | 94-105-014 | Insulating Boot  |
| 10 | 94-170-150 | Female Connector |



# WELDING CABLE



## Convenient Cut Length Cable in Boxes

**PowerWeld** carries inventory of the most popular welding and primary cable sizes in convenient pre-cut lengths of 50' and 100'. These lengths are attractively boxed and ready to go right off the shelf for clean and trouble free cable sales.

**Flex-a-Prene®** 30 AWG 600 volt all-weather grade welding cable is rated at -50°C to +105°C giving it outstanding cold weather flexibility. Made with a special jacketing compound, this standard stock welding cable gives you high flexibility without sacrificing weather resistance. **Flex-a-Prene®** welding cable is the first to meet **SAE J1127**, a standard that requires a minimum amount of copper per gauge. To meet this standard, the cable must also pass extensive tests against flame, heat, and cold. These conditions are similar to what welders experience on a daily basis.

## Specification Data

AWG SIZE	STRANDING	NOM. INSULATION THICKNESS (INCHES)	NOM. O.D. INCHES	APPROX. POUNDS PER 1000 FEET
6	259 X 30	.060	.320	128
4	364 X 30	.060	.348	162
2	624 X 30	.060	.420	260
1	780 X 30	.080	.503	328
1/0	988 X 30	.080	.533	400
2/0	1235 X 30	.080	.586	490
3/0	1539 X 30	.080	.625	596
4/0	2014 X 30	.080	.720	800

Part #	Size	Description
4-50	50 ft #4	Welding Cable
4-100	100 ft #4	Welding Cable
2-50	50 ft #2	Welding Cable
2-100	100 ft #2	Welding Cable
1-50	50 ft #1	Welding Cable
1-100	100 ft #1	Welding Cable
1/0-50	50 ft #1/0	Welding Cable
1/0-100	100 ft #1/0	Welding Cable
2/0-50	50 ft #2/0	Welding Cable
2/0-100	100 ft #2/0	Welding Cable
3/0-50	50 ft #3/0	Welding Cable
3/0-100	100 ft #3/0	Welding Cable
4/0-50	50 ft #4/0	Welding Cable
4/0-100	100 ft #4/0	Welding Cable
10/3-100	100 ft #10/3	Power Cable
10/4-100	100 ft #10/4	Power Cable

## WHIP CABLE ASSEMBLIES

Whip cable is highly flexible with annealed 36 (.005) gauge bare copper conductor, insulated with an orange EPDM jacket and paper separator. Operating temperatures range from -50°C to +105°C (-58°F to +221°F). Rated to 600 volts. Meets or exceeds ASTM B-172.

10 feet #2 cable with PW4B holder and male connector

WHIP CABLE ASS'Y	
MODEL	STYLE
2-WA	10 FEET #2

10 feet #1 cable with PW4B holder and male connector

WHIP CABLE ASS'Y	
MODEL	STYLE
1-WA	10 FEET #1



# MIG WELDER CARTS



Gas cylinder platform designed to handle up to 6.5" diameter cylinders  
 The large drawer is 18.9" X 11.9" X 5.5" and designed for tools, angle grinder or drill, the small drawer is 18.9" X 11.9" X 3.2" and designed for contact tips, nozzles, and other smaller items. The drawer slides are ball bearing for easy movement.  
 Dual side hooks for holding cables, helmets, MIG gun etc.  
 6" X 1.15" rear wheels and 2.5" X 1" front casters for ease of movement  
 Top shelf dimensions: 21" x 12.75"  
 Dimensions- Assembled- 38.6" x 18.5" x 30"  
 Weight: 52 lbs Load: 150 lbs capacity

MODEL	STYLE
CCMIG-DELUXE	2 DRAWER



**EASY TO SHIP**  
**EASY TO STOCK**  
**ASY TO ASSEMBLE**

Boxed MIG carts make sense.  
 Easy to ship and easy to stock.



Folding front handle to reduce footprint and open area to machine controls  
 Front swivel wheels for easy movement  
 Side cable wraps keep lead and ground tidy  
 Bottom shelf for accessories  
 Cylinder rack with safety chain holds up to 7-1/2" diameter - 80 lb cylinders  
 Black power coat finish for durability  
 Fits New Millermatic® 141 and 190 model machines  
 Top Shelf Dimensions: 12.5" W x 22.5" L  
 Overall Cart Dimensions: 18.5" W x 26.5" H  
 Weight Capacity: 110 lbs

MODEL	STYLE
CCMIG-2	2 SHELF



Gas cylinder platform designed to handle up to 7.5" diameter cylinders.  
 Four drawers for convenient storage of tools, wires helmet and more. The top drawer is 11" X 9.75" X 1.5". Three large drawers are all 11" x 15" with depths of 2.5", 6.5", and 9.5" respectively. The drawer slides are ball bearing for easy movement. Dual side hooks for holding cables, helmets, MIG gun etc.  
 6" X 1.15" rear wheels and 2.5" X 1" front casters for ease of movement  
 Top shelf dimensions: 20.25" x 14"  
 Dimensions- Assembled- 33.5" x 17.5" x 33.5"  
 Weight: 90 lbs  
 Load: 150 lbs capacity

MODEL	STYLE
CCMIG-DX4	4 DRAWER

### CCMIG Industrial MIG Cart Dimensions:

Heavy Duty Steel Construction  
 Top Shelf: 17 3/4" L x 11 1/4" W  
 Middle Shelf: 15 1/4" L x 11 1/4" W  
 Bottom Shelf: 17 3/8" L x 11 1/4" W  
 Cylinder Shelf: 10 1/2" L x 11 1/4" W  
 Cylinder shelf holds from small to larger industrial cylinders  
 Rear Wheels: 6" x 1 1/4"  
 Front Swivel Wheels: 2 1/4" x 7/8"

Holds your small MIG welder, gas cylinder plus plenty of room for tools and accessories.  
 Front handle for easy movement  
 MIG gun and ground lead holders on sides  
 Cylinder holding chains  
 Height: 24 3/4"  
 Easy to assemble.



MODEL	STYLE
CCMIG-B	BLACK



MODEL	STYLE
CCMIG	BLUE

# TUNGSTEN ELECTRODES



Powerweld offers eight types of tungsten electrode to cover every TIG welding application. Electrodes are 7" (175mm) in length and packaged 10 rods per box. All tungstens have color coded tips for easy identification, and meet AWS A5.12 specifications. Electrodes are supplied with a smooth, round, bright centerless ground finish.

Type	Dia in. (mm)	Part #	Voltage	Composition	Materials Welded
<b>Pure (EWP)</b>					
Unalloyed tungsten electrodes. Provide good stability when used with alternating current, either balanced wave or continuously high frequency stabilized. Maintain a clean, balled end which is preferred for aluminum and magnesium welding.	0.040(1.0) 1/16(1.6) 3/32(2.4) 1/8(3.2) 5/32(4.0)	<b>PUR040</b> <b>PUR116</b> <b>PUR332</b> <b>PUR18</b> <b>PUR532</b>	AC	99.5% Tungsten 0.5% Other	Aluminum Magnesium
<b>2% Thoriated (EWTh-2)</b>					
Thoria alloy increases electrode life. Higher electron emissions result in better arc starting and arc stability. Maintains a sharp point. Resistance to tungsten contamination of the weld.	0.040(1.0) 1/16(1.6) 3/32(2.4) 1/8(3.2) 5/32(4.0)	<b>2PC040</b> <b>2PC116</b> <b>2PC332</b> <b>2PC18</b> <b>2PC532</b>	DC	97.3% Tungsten 1.7%-2.2% Thorium 0.5% Other	Carbon Steel Stainless Steel Nickel Alloy Titanium Copper
<b>Zirconiated (EWZr-1)</b>					
Preferred electrode for applications where tungsten contamination of the weld must be minimized. Performs well with alternating current as it retains a balled end during welding.	0.040(1.0) 1/16(1.6) 3/32(2.4) 1/8(3.2) 5/32(4.0)	<b>ZIR040</b> <b>ZIR116</b> <b>ZIR332</b> <b>ZIR18</b> <b>ZIR532</b>	AC	99.0% Tungsten 0.15%-0.5% Zirconium 0.5% Other	Aluminum Magnesium
<b>2% Ceriated (EWCe-2)</b>					
Provides easy arc starting, improved arc stability and reduced rate of vaporization or burn-off. Operates well with alternating current or direct current, either polarity.	0.040(1.0) 1/16(1.6) 3/32(2.4) 1/8(3.2) 5/32(4.0)	<b>CER040</b> <b>CER116</b> <b>CER332</b> <b>CER18</b> <b>CER532</b>	DC AC Inverters	97.3% Tungsten 1.8%-2.2% Cerium 0.5% Other	Carbon Steel Stainless Steel Nickel Alloy Titanium Aluminum
<b>1% Lanthanated (EWLa-1)</b>					
Provides easy arc starting, improved arc stability and reduced rate of vaporization or burn-off. Operates well with alternating current or direct current, either polarity.	0.040(1.0) 1/16(1.6) 3/32(2.4) 1/8(3.2) 5/32(4.0)	<b>RE040</b> <b>RE116</b> <b>RE332</b> <b>RE18</b> <b>RE532</b>	DC AC Inverters	98.3% Tungsten 0.8-1.2% Lanthanum 0.5% Other	Carbon Steel Stainless Steel Nickel Alloy Titanium Aluminum
<b>1.5% Lanthanated (EWLa-1.5)</b>					
Provides easy arc starting, improved arc stability and significantly reduced tip erosion rate. Operates well with alternating current or direct current, either polarity.	0.040(1.0) 1/16(1.6) 3/32(2.4) 1/8(3.2) 5/32(4.0)	<b>LAN15040</b> <b>LAN15116</b> <b>LAN15332</b> <b>LAN1518</b> <b>LAN15532</b>	DC AC Inverters	97.8% Tungsten 1.3%-1.7% Lanthanum 0.5% Other	Carbon Steel Stainless Steel Nickel Alloy Titanium Aluminum
<b>2% Lanthanated (EWLa-2)</b>					
Provides easy arc starting, improved arc stability and significantly reduced tip erosion rate. Operates well with alternating current or direct current, either polarity.	0.040(1.0) 1/16(1.6) 3/32(2.4) 1/8(3.2) 5/32(4.0)	<b>LAN20040</b> <b>LAN20116</b> <b>LAN20332</b> <b>LAN2018</b> <b>LAN20532</b>	DC AC Inverters	97.3% Tungsten 1.8%-2.2% Lanthanum 0.5% Other	Carbon Steel Stainless Steel Nickel Alloy Titanium Aluminum
<b>Tri-Mix (EWG)</b>					
Tri-Mix tungsten electrode (AWS classification EWG) combines three non-radioactive rare earth materials (La <sub>2</sub> O <sub>3</sub> , Y <sub>2</sub> O <sub>3</sub> , CeO <sub>2</sub> ) into one tungsten. Extensive testing has resulted in the development of an optimum composition blend for a high performing tungsten electrode. Performance features include: Easy arc starting and re-ignition, high arc pressure, very good arc stability, excellent endurance. Suitable for carbon steel, stainless steel, copper and aluminum. AC or DC applications.	0.040(1.0) 1/16(1.6) 3/32(2.4) 1/8(3.2) 5/32(4.0)	<b>TM040</b> <b>TM116</b> <b>TM332</b> <b>TM18</b> <b>TM532</b>	DC AC Inverters	Tungsten Lanthanum Cerium Yttrium	Carbon Steel Stainless Steel Nickel Alloy Titanium Aluminum

# MILD STEEL WIRE & COPPER FREE WIRE

Certified by CWB to CSA W48-Class ER49S-6



## Specifications

AWS A5.18 Class ER70S-6



## Description

S6 contains high levels of manganese and silicon for stronger deoxidizing power where stringent cleaning procedures are not possible. This wire has been designed to provide X-ray quality porosity-free welds and the highest tensile strength (as welded) of the plain carbon steel wires. The high silicon content increases the fluidity of the weld pool, creating a smoother bead appearance and resulting in minimal post-weld grinding. S6 is excellent where poor fit-ups or rusty and oily plates may be used.

Wire is precision level layer wound.

## Applications

Construction work, tanks, truck bodies, farm implements, pipes, steel castings or forgings, shaft build-ups and general shop fabrications.

DIAMETER	SPOOL SIZES					PACKAGING
	1KG (2.2LB)	5KG (11LB)	15KG (33LB)	20KG (44LB)	250KG (550LB)	
0.6mm (.023")	S6061	S6065	S60615			1kg spools are packaged 18 spools per master carton  20kg spools are packaged 60 spools (1200kg) per pallet  250 kg drums are packaged 2 drums (500kg) per pallet
0.8mm (.030")	S6081	S6085	S60815	S60820		
0.9mm (.035")	S6091	S6095	S60915	S60920	S609250	
1.2mm (.045")	S6121	S6125	S61215	S61220	S612250	

## MILD STEEL TIG RODS

### RG45

RG45116 ROD RG45 1/16" X 36"  
 RG4518 ROD RG45 1/8" X 36"  
 RG45316 ROD RG45 3/16" X 36"  
 RG45332 ROD RG45 3/32" X 36"

### RG60

RG60116 ROD RG60 1/16" X 36"  
 RG6018 ROD RG60 1/8" X 36"  
 RG60316 ROD RG60 3/16" X 36"  
 RG60332 ROD RG60 3/32" X 36"  
 RG60532 ROD RG60 5/32" X 36"

### ER70S-2

### Certified by CWB



S2035 ROD E70S2 .035" X 36"  
 S2045 ROD E70S2 .045" X 36"  
 S2116 ROD E70S2 1/16" X 36"  
 S218 ROD E70S2 1/8" X 36"  
 S2316 ROD E70S2 3/16" X 36"  
 S2332 ROD E70S2 3/32" X 36"  
 S2532 ROD E70S2 5/32" X 36"

### ER70S-3

S3116 ROD ER70S3 1/16" X 36"  
 S318 ROD ER70S3 1/8" X 36"  
 S3332 ROD ER70S3 3/32" X 36"

### ER70S-6

S6035 ROD ER70S6 .035" X 36"  
 S6045 ROD ER70S6 .045" X 36"  
 S6116 ROD ER70S6 1/16" X 36"  
 S618 ROD ER70S6 1/8" X 36"  
 S6332 ROD ER70S6 3/32" X 36"  
 S6532 ROD ER70S6 5/32" X 36"

## E70C-6M METAL-CORED WIRE

Powerweld E70C-6M is a metal-cored MIG wire engineered for high-deposition welding of mild and low-alloy steels. It produces a smooth, stable arc with low spatter, minimal slag cleanup, and exceptionally low fume levels, making it ideal for semi-automatic and automatic applications. This wire delivers a clean, attractive weld bead and offers excellent impact toughness and crack resistance, even at low temperatures. Suitable for single and multi-pass welding in flat or horizontal positions.

Class: E70C-6M



### Specification:

AWS A5.18 Class E70C-6M  
 AWS A5.18M Class E48C-6M  
 CSA W48-23 Class E491T15-M20A4-CS1-H4  
 CSA W48-23 Class E491T15-M21A4-CS1-H4  
 CSA W48-23 Class E49C-6M-J-H4  
 EN ISO 17632-A: T 42 3 M M21 1  
 EN ISO 17632-B: T49 3 T15-1 M21 A

### Applications:

Structural fabrication, heavy equipment manufacturing, shipbuilding, and general production welding.



PW70C6M1215 E70C-6M METAL CORE WIRE 1.2MM X 15KG

PW70C6M1615 E70C-6M METAL CORE WIRE 1.6MM X 15KG

Packaging: 15 kg spool, 1080 kg (72 spools) pallet

PACKAGING: 10# (4.5kg) Tubes, 50# (22.7kg) per carton

# FLUX CORED WIRE

## E71T-GS ALL POSITION

## SELF-SHIELDING - GASLESS

### Features

- No Shielding Gas Needed
- Single Pass Welding of Thin Gauge Galvanized Steel
- Excellent for Outdoor Use
- Smooth Arc – Minimal Spatter
- DC- Straight Polarity
- Works Well In Wind

### Description

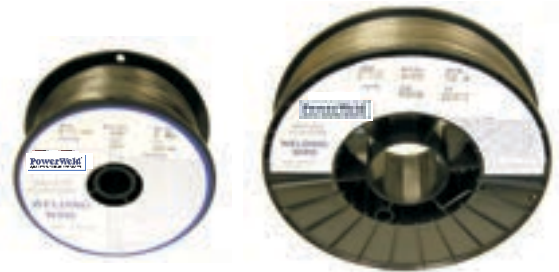
**Powerweld** gasless wire E71T-GS is an all-position, self-shielded flux-cored wire designed for single pass fillet and lap welding on galvanized or carbon steel as thin as 20 gauge, without burn-through. Gasless wire E71T-GS is commonly used on small portable 110 volt welding machines, offering smooth arc action with very little spatter. Travel speed is fast, penetration is good and slag removal is easy.

### Applications

**Powerweld** gasless wire E71T-GS is most popular for the home workshop welder because it works so well on 110 volt machines and can be used on thin gauge steel. Gasless wire E71T-GS is used quite extensively in automobile body shops for door or body repairs and it is also used for sheet metal duct work on lap and butt joints.

NOTE: As with all self-shielded wires, **Powerweld** gasless wire E71T-GS does contain fluoride compounds, which require more attention to ventilation when being used to weld galvanized steel. The zinc oxide formed during welding should not be inhaled as it can cause metal fume fever. When welding indoors or in an enclosed area, be sure that the ventilation is adequate.

**PACKAGING:** Spools individually boxed



Item Number	TYPE E71T-GS Diameter / Package
FC0302	.030 Dia. X 2# Spool
FC03010	.030 Dia. X 10# Spool
FC03033	.030 Dia. X 33# Spool
FC0352	.035 Dia. X 2# Spool
FC03510	.035 Dia. X 10# Spool
FC03533	.035 Dia. X 33# Spool
FC0452	.045 Dia. X 2# Spool
FC04510	.045 Dia. X 10# Spool
FC04533	.045 Dia. X 33# Spool

## E71T-1C/1M ALL POSITION

**Powerweld E71T-1C/1M** is a rutile type flux cored wire designed for general purpose all position welding with 100% CO2 or a 80% Argon – 20% CO2 mixture shielding gas. Features excellent welding performance and higher welding efficiency than traditional welding wires with it's smooth arc characteristics, while producing low spatter and low fume emissions. Used for single and multiple pass welding of mild steel and 490 Mpa (70,000 psi) grade high tensile steel. Applications include structural steel fabrication, pressure vessels, bridges, machinery etc.

- Classification: E71T-1C/1M per AWS A5.20, ASME SFA5.20  
 Approvals: CWB to CSA W48-01, E491T-1-H4, E491T-1M-H4  
 ABS 3YSAH5  
 LR 3YSH5  
 DNV III YMS(H5)  
 BV SA3YMH5



Item Number	TYPE E71T-1C/1M Diameter / Package
PW711215	.045" Dia. (1.2mm) X 33# (15kg) Spool
PW711615	1/16" Dia. (1.6mm) X 33# (15kg) Spool



- Available Diameters: .045" Dia. (1.2mm), 1/16" Dia. (1.6mm)  
 Spool Size: 33 lb (15 kg)  
 Pallet Quantity: 72 spools - 2376 lb (1080 kg)  
 Welding Current: DC + reverse polarity - electrode positive

# MILD STEEL ELECTRODES

## Powerweld 6011

**Powerweld 6011** is a cellulose type electrode with fast-freezing slag for general purpose welding in all positions. Deep penetrating for use on painted, galvanized or dirty surfaces. Operates on AC or DC current

### Applications

Used for general fabrication, structural work and galvanized sheet metal.

## Powerweld 6013

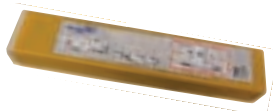


**Powerweld 6013** is a high titania coated electrode. This electrode provides good wetting and shallow penetration for thin sheet metal applications (using smaller diameter electrodes), but with sufficient penetration for welding medium gauge steel. PowerWeld 6013 is an all-purpose electrode that provides a soft steady arc which is easily regenerated, easy slag control for vertical-down welding, low spatter and a beautiful bead appearance. PowerWeld 6013 electrodes may be used in any position with AC or DC (straight or reverse polarity).

### Applications

**Powerweld 6013** is commonly used for automobile bodies, truck frames and bodies, ornamental iron, metal furniture, farm implementations, machinery guards, storage tanks, or wherever appearance is important or desirable.

## Powerweld 7014



**Powerweld 7014** is an iron power, rutile type electrode providing high deposition rates and fast travel speed. This electrode provides a stable arc, flat smooth bead appearance and easy slag removability PowerWeld 7014 is used for all position, single-pass and multi-layer welding applications. AC or DC (straight or reverse polarity) may be used.

### Applications

Typical applications include: ship structures, bridges, structural steel for buildings, sheet metal, ornamental iron, auto bodies and fenders, machine parts, storage tanks, etc.

# LOW HYDROGEN ELECTRODES

## Powerweld 7018



**Powerweld 7018** is a low-hydrogen electrode for use in all positions on low, medium and high-carbon steels. 70,000 PSI tensile strength. Ideal for out of position welding and tacking. Runs on AC or DCEP (reverse) polarity. Features a steady arc with low spatter and medium penetration, providing X-ray quality weld deposits.

### Applications

**Powerweld 7018** is typically used for heavy machinery fabrication, pressure vessels, field and shop welding of bridges and structural steels, cast steels and shipbuilding, or most ASTM specifications on medium carbon and low alloy steels.

**Powerweld 7018AC** is a low-hydrogen electrode for use in all positions on low, medium and high-carbons steels. 70,000 PSI tensile strength. Ideal for out of position welding and tacking. Runs on AC or DCEP (reverse) polarity. Specially formulated to operate with small 208/230 volt AC welders.

## Powerweld 7018AC

### Applications

Typical applications include general fabrication, tack and skip welds, and for welding thin sections of steel.

ALLOY	PART NUMBER	DIAMETER		LENGTH	
		MM	INCHES	MM	INCHES
<b>E6011</b> AWS A5.1	<b>PW601125</b>	2.5	3/32	350	14
	<b>PW601132</b>	3.2	1/8	350	14
<b>E6013</b> AWS A5.1 CWB TO CSA W48 E4313	<b>PW601320</b>	2.0	5/64	300	12
	<b>PW601325</b>	2.5	3/32	350	14
	<b>PW601332</b>	3.2	1/8	350	14
	<b>PW601340</b>	4.0	5/32	350	14
<b>E7014</b> AWS A5.1	<b>PW701425</b>	2.5	3/32	350	14
	<b>PW701432</b>	3.2	1/8	350	14
	<b>PW701440</b>	4.0	5/32	350	14
<b>E7018</b> AWS A5.1 CWB TO CSA W48 E4918-1-H8	<b>PW701825</b>	2.5	3/32	350	14
	<b>PW701832</b>	3.2	1/8	350	14
	<b>PW701840</b>	4.0	5/32	350	14
<b>E7018AC</b> AWS A5.1	<b>PW7018AC25</b>	2.5	3/32	350	14
	<b>PW7018AC32</b>	3.2	1/8	350	14

PACKAGING: 2KG (4.4 lbs) Plastic Boxes - 20kg (44 lbs) per Master Case

# STAINLESS ALLOYS

## STAINLESS MIG WIRE

**308L - Powerweld** 308L is used for TIG and MIG welding of unstabilized steels such as types 301, 302, 304, 305, 308. The average carbon content of 0.02% produces a weld deposit with good resistance against intergranular corrosion caused by carbide precipitation. This filler metal is the most popular grade among stainless steels, used for general purpose applications.

**309L - Powerweld** 309L is used for the welding of similar alloys in wrought or cast form. It is mostly used for welding dissimilar materials such as mild steel to stainless steel, as well as for a barrier layer in stainless overlays. It has low carbon content of less than 0.03% reduces the possibility of intergranular corrosion. For some applications, welding of straight chromium steels.

**316L - Powerweld** 316L is used to weld wrought and cast forms of similar composition, as well as low carbon molybdenum-bearing austenitic alloys. The lower ferrite level of this normal composition reduces the rate of corrosion in certain media and is suitable for use at cryogenic temperatures. The presence of molybdenum increases its creep resistance at elevated temperatures.

All grades meet specification ASME SFA5.9 and are certified by CWB to AWS A5.9

Suggested Welding Parameters for Stainless Steel Welding

**MIG Welding:** DCEP

Shielding Gas: 98% Argon + 2% Oxygen  
Gas Flow: 30 to 50 CFH



Size	Amperage	Voltage
.023"	35 - 70	21 - 26
.030"	50 - 100	24 - 28
.035"	160 - 210	26 - 29
.045"	180 - 250	28 - 32

Diameter	Spool Size	308L	309L	316L
.024" (0.6mm)	2# (0.9kg) spool	308L02402	309L02402	316L02402
	10# (4.5kg) spool	308L02410	309L02410	316L02410
	33# (15kg) spool	308L02433	309L02433	316L02433
.030" (0.8mm)	2# (0.9kg) spool	308L03002	309L03002	316L03002
	10# (4.5kg) spool	308L03010	309L03010	316L03010
	33# (15kg) spool	308L03033	309L03033	316L03033
.035" (0.9mm)	2# (0.9kg) spool	308L03502	309L03502	316L03502
	10# (4.5kg) spool	308L03510	309L03510	316L03510
	33# (15kg) spool	308L03533	309L03533	316L03533
.045" (1.2mm)	2# (0.9kg) spool	308L04502	309L04502	316L04502
	10# (4.5kg) spool	308L04510	309L04510	316L04510
	33# (15kg) spool	308L04533	309L04533	316L04533

Diameter	308LSI	309LSI	316LSI
.035" (0.9mm)	308LSI03533	309LSI03533	316LSI03533
.045" (1.2mm)	308LSI04533	309LSI04533	316LSI04533

PACKAGING: 2 kg (4.4 lbs) boxes, 20 kg (44 lbs) per carton

## STAINLESS TIG WIRE

**TIG Welding:** DCEN

Shielding Gas: 100% Argon  
Gas Flow: 30 to 40 CFH



Size	Amperage	Voltage
.035"	60 - 90	12 - 15
.045"	80 - 110	13 - 16
1/16"	90 - 130	14 - 18
3/32"	120 - 175	15 - 20
1/8"	150 - 220	15 - 20

Diameter	308L	309L	316L
.035" (0.9mm)	ER308L-035	ER309L-035	ER316L-035
.045" (1.2mm)	ER308L-045	ER309L-045	ER316L-045
1/16" (1.6mm)	ER308L-116	ER309L-116	ER316L-116
3/32" (2.4mm)	ER308L-332	ER309L-332	ER316L-332
1/8" (3.2mm)	ER308L-18	ER309L-18	ER316L-18
5/32 (4.0mm)	ER308L-532	ER309L-532	ER316L-532

Each TIG rod is stamped with grade for identification.

PACKAGING: 10 pound (4.5kg) tubes

## STAINLESS ELECTRODES



PRODUCT DESCRIPTION	DIAMETER / SIZE	ITEM #
E308L-16 STAINLESS STEEL ELECTRODE AWS A5.4 ASME SFA5.4 CLASS E308L-16 AC/DC	3/32 - 2.5mm X 300mm	PW308L25
	1/8 - 3.2mm X 350mm	PW308L32
	5/32 - 4.0mm X 350mm	PW308L40
E309L-16 STAINLESS STEEL ELECTRODE AWS A5.4 ASME SFA5.4 CLASS E309L-16 AC/DC	3/32 - 2.5mm X 300mm	PW309L25
	1/8 - 3.2mm X 350mm	PW309L32
	5/32 - 4.0mm X 350mm	PW309L40
E316L-16 STAINLESS STEEL ELECTRODE AWS A5.4 ASME SFA5.4 CLASS E316L-16 AC/DC	3/32 - 2.5mm X 300mm	PW316L25
	1/8 - 3.2mm X 350mm	PW316L32
	5/32 - 4.0mm X 350mm	PW316L40

PACKAGING: 2 kg (4.4 lbs) boxes, 20 kg (44 lbs) per carton

## ALUMINUM ALLOYS

Precision made on the latest equipment from materials of the finest quality. **Powerweld** spooled aluminum wire is triple degreased to provide the highest degree for cleanliness and luster. The **Powerweld** "shaved finish" produces absolute uniformity in diameter along with excellent surface smoothness so as to guarantee uninterrupted feeding in automatic and semi-automatic operations.

Rigid quality controls in every stage of manufacture and packaging assure maximum welding and brazing efficiency and trouble free welding results. Unique cleaning methods remove all traces for oxides, lubricants and acids. Special packaging maintains absolute cleanliness and prevents contamination.

With state of the art, proprietary processes and advanced testing capabilities, **Powerweld** is recognized for our quality aluminum welding products.

## ALUMINUM MIG WIRE



### SHAVED - TRIPLE DEGREASED PRECISION LEVEL LAYER WOUND

404303001	WIRE MIG .030 X 1# SPOOL
404303005	WIRE MIG .030 X 5# SPOOL
404303013	WIRE MIG .030 X 13# SPOOL
404303016	WIRE MIG .030 X 16# SPOOL
404303501	WIRE MIG .035 X 1# SPOOL
404303505	WIRE MIG .035 X 5# SPOOL
404303516	WIRE MIG .035 X 16# SPOOL
404304501	WIRE MIG .045 X 1# SPOOL
404304516	WIRE MIG .045 X 16# SPOOL
404311616	WIRE MIG 1/16" X 16# SPOOL
535603001	WIRE MIG .030 X 1# SPOOL
535603005	WIRE MIG .030 X 5# SPOOL
535603016	WIRE MIG .030 X 16# SPOOL
535603501	WIRE MIG .035 X 1# SPOOL
535603505	WIRE MIG .035 X 5# SPOOL
535603516	WIRE MIG .035 X 16# SPOOL
535604501	WIRE MIG .045 X 1# SPOOL
535604516	WIRE MIG .045 X 16# SPOOL
535611616	WIRE MIG 1/16" X 16# SPOOL
555404501	WIRE MIG .045 X 1# SPOOL
555404520	WIRE MIG .045 X 20# SPOOL

## ALUMINUM TIG WIRE



ER4043-116	WIRE TIG ALUMINUM 1/16" X 36"
ER4043-18	WIRE TIG ALUMINUM 1/8" X 36"
ER4043-332	WIRE TIG ALUMINUM 3/32" X 36"
ER4043-532	WIRE TIG ALUMINUM 5/32" X 36"
ER5356-116	WIRE TIG ALUMINUM 1/16" X 36"
ER5356-18	WIRE TIG ALUMINUM 1/8" X 36"
ER5356-332	WIRE TIG ALUMINUM 3/32" X 36"
ER5356-532	WIRE TIG ALUMINUM 5/32" X 36"

**PACKAGING: 10# (4.5kg) Tubes 50# (22.7kg) Cartons**

## ALUMINUM SOLDER

**211118** 1/8" x 18" Aluminum Rub-on Solder

Maximum strength, self-fluxing solder for joining, build-up and hardfacing aluminum.

High zinc content gives good color match to aluminum.

No flux required – post cleanup is eliminated.

Low working temperature prevents warpage, distortion and discoloration.



**211118**

Aluminum Rub-on Solder 1/8" x 18"  
Packaging: 1 lb tube

# COPPER BASED ALLOYS

## FLUX COATED BRONZE

### AWS A5.8 RBCuZn-C

FC18	ROD FLUX COATED BRONZE 1/8" X 36"
FC316	ROD FLUX COATED BRONZE 3/16" X 36"
FC332	ROD FLUX COATED BRONZE 3/32" X 36"

PACKAGING: 10# (4.5kg) Tubes 50# (22.7kg) Carton



## SILICON BRONZE

### AWS A5.7 ERCuSi-A

SB025-10	WIRE SILICON BRONZE .025 X 10#
SB025-2	WIRE SILICON BRONZE .025 X 2#
SB030-10	WIRE SILICON BRONZE .030 X 10#
SB030-2	WIRE SILICON BRONZE .030 X 2#
SB030-30	WIRE SILICON BRONZE .030 X 30#
SB035-10	WIRE SILICON BRONZE .035 X 10#
SB035-2	WIRE SILICON BRONZE .035 X 2#
SB035-30	WIRE SILICON BRONZE .035 X 30#
SB035-500	WIRE SILICON BRONZE .035 X 500#
SB045-10	WIRE SILICON BRONZE .045 X 10#
SB045-2	WIRE SILICON BRONZE .045 X 2#
SB045-30	WIRE SILICON BRONZE .045 X 30#

SB116	ROD SILICON BRONZE 1/16" X 36"
SB18	ROD SILICON BRONZE 1/8" X 36"
SB332	ROD SILICON BRONZE 3/32" X 36"

ROD PACKAGING: 10# (4.5kg) Tubes 50# (22.7kg) Carton



## BARE BRONZE

### AWS A5.8 RBCuZn-C

BB116	ROD BARE BRONZE 1/16" X 36"
BB14	ROD BARE BRONZE 1/4" X 36"
BB18	ROD BARE BRONZE 1/8" X 36"
BB316	ROD BARE BRONZE 3/16" X 36"
BB332	ROD BARE BRONZE 3/32" X 36"
BB532	ROD BARE BRONZE 5/32" X 36"

PACKAGING: 10# (4.5kg) Tubes 50# (22.7kg) Carton



## DEOXIDIZED COPPER

### AWS A5.7 ERCu

DEOX035-2	DE-OX COPPER WIRE .035" X 2#
DEOX035-30	DE-OX COPPER WIRE .035" X 30#
DEOX045-2	DE-OX COPPER WIRE .045" X 2#
DEOX045-30	DE-OX COPPER WIRE .045" X 30#

DEOX116	DE-OX COPPER TIG ROD 1/16" X 36"
DEOX18	DE-OX COPPER TIG ROD 1/8" X 36"
DEOX332	DE-OX COPPER TIG ROD 3/32" X 36"

ROD PACKAGING: 10# (4.5kg) Tubes 50# (22.7kg) Carton



## CHEMICALS

### ANTI-SPATTER PREMIUM



#### ANTI-SPATTER PREMIUM 14OZ AEROSOL

- Nontoxic formulation.
- Biodegradable ingredients.
- Reduces clean up time.
- Reduces spatter build-up on MIG nozzles.
- Prevents spatter adhesion on surface.
- Reduces clean up time.
- Heat-resistant to withstand high temperature use.
- Non-flammable.
- Paint compatible.
- Contains no silicones
- Contains no fluorocarbons

MODEL	SIZE
PW1622-14	397 ml/14oz

### ANTI-SPATTER



MODEL	RANGE	SIZE
D500-1	ANTI-SPATTER	1 GALLON (RED)
D500-5	ANTI-SPATTER	5 GALLON
D500-55	ANTI-SPATTER	55 GALLON DRUM

### COOLANT



#### Coolant For Plasma, MIG & TIG Machines

An ethylene glycol based formulation with de-ionized water for low conductivity. For use in radiator circulator and re-circulator systems.

Suitable for cooling Plasma, MIG, TIG and resistance welding systems, as well as general industrial cooling applications. Temperature range: 19°F, 6°F and -60°F

MODEL	RANGE	SIZE
COOL1	19°F / -7°C	1 GAL/3.78L
COOL2	6°F / -14°C	1 GAL/3.78L
COOL3	-60°F / -52°C	1 GAL/3.78L
COOL1-55	19°F / -7°C	55 GAL/205L

PACKAGED 4 GALLONS / CASE

## NOZZLE DIP

Economical formula to protect both manual and automatic MIG gun nozzles and MIG gun tips.



- Safe.
- Non-toxic.
- Contains no silicones.
- Non-flammable.
- Odorless.
- Contains no hydrocarbon solvents.
- 16 oz. unbreakable container.
- Private label program available.

MODEL	SIZE
108-16	454 grams/16oz

### ZINC GALV SPRAY



Powerweld zinc rich re-galvanizing aerosols provide protective coatings to metals which help fight against rust and corrosion. Fast drying formula will not blister or burn away. Available in two finishes: PW6066 provides a bright finish. PW6095 provides a matte finish.

#### PW6066

Zinc Galv Spray 12oz Bright Finish

#### PW6095

Zinc Galv Spray  
14oz Aerosol Matte finish

MODEL	SIZE
PW6066	340 grams / 12oz
PW6095	396 grams / 14oz

### DYE PENETRANTS



MODEL	DESCRIPTION	SIZE
PW1500	Aerosol Cleaner	16 oz
PW2500	Aerosol Developer	16 oz
PW3000	Aerosol Penetrant	16 oz

Powerweld Dye Penetrant Inspection chemicals provide a simple and cost effective method for the detection of surface flaws, cracks and defects. This three step process is applicable for use on materials of steel, stainless steel, aluminum, copper, cast iron and brass. Defects are clearly visible as shown by a red dye without the requirement of additional equipment. Meets military, nuclear, ASME and ASTM specifications.

# CHEMICALS

## SILVER BRAZING FLUX

PART NUMBER	DESCRIPTION	SIZE
HT1	FLUX-HIGH TEMP. SILVER BRAZING	1LB
HT12	FLUX-HIGH TEMP. SILVER BRAZING	1/2LB
HT5	FLUX-HIGH TEMP. SILVER BRAZING	5LB
LT1	FLUX-LOW TEMP. SILVER BRAZING	1LB
LT12	FLUX-LOW TEMP. SILVER BRAZING	1/2LB
LT14	FLUX-LOW TEMP. SILVER BRAZING	1/4LB
LT5	FLUX-LOW TEMP. SILVER BRAZING	5LB
LT35	FLUX-LOW TEMP. SILVER BRAZING	35LB

White low temp  
TEMPERATURE 1050-1600° F 565-870°C

Black Hi Temp  
TEMPERATURE 1050-1700° F 565-925°C



## LUBE PADS & LUBRICANT

### LUBE PADS



#### Wire Lube Pads

Keeps MIG, sub-arc, and flux core cable conduits producing for up to 3 months without down time for cleaning. Eliminates erratic wire feed caused by dust, particles, and flashing being trapped inside conduit lines. Increase wire surface feedability. Wire lube pad lowers the coefficient of friction in conduits approximately 60% and increases life of wire feed units. Pretreatment of wire lube pads so they will not dry out or evaporate. Contains no solvents, abrasives, carbon, sulfur, nitrogen, moly disulfide or silicones. Non-toxic, non-flammable.

Economical and easy to use. Available in recloseable plastic boxes, 4 or 6 pads to a box with one clip. Wire lube pads can be certified for nuclear welding. Flexibility to use pad on both sides and on any axis. Private label program available.

MODEL	# OF PADS
LUBE4	4
LUBE6	6

### ROUND LUBE PADS

Powerweld's Mig Lube Pads are engineered to apply Powerweld's lubricant (come pretreated). Reapply lubricant as necessary. Lubrication allows smooth feeding of wire with poor cast, excessive helix, rusty surface and long feed liners (over 10').



#### Features:

Lube pads are pre treated with Powerweld's lubricant.

Lubrication allows smooth feeding of wires with poor cast, helix, rust and long feed liners.

For Aluminum, use Powerweld's Untreated White Pads.

MODEL	SIZE
PW7060	TREATED PKG/6
PW7061	UNTREATED PKG/6

### LUBRICANT

Powerweld lubricant is specially formulated to re-lubricate welding wire lube pads. Save money by re-using pads, lower production costs by reducing wire feed drag. Removes wire dirt, rust and increases tip and liner life.

MODEL	SIZE
PW7040	8 oz / 236 ml



# AUTO DARKENING HELMETS

## PROFESSIONAL SERIES

### TRUE-COLOR Technology

Viewing Area :  
98mm x 55mm (3.86" x 2.17")



MODEL	STYLE
PWH9855G1	SKULL FLAME IN CLAMSHELL PKG



MODEL	STYLE
PWH9855G4	SKULL CHAIN IN CLAMSHELL PKG

**Auto-Darkening Filter Welding Helmet**  
**Solar Powered - Fully Automatic**  
**Power on / off**  
**Conforms to ANSI Z87.1-2003 and**  
**Colts CSA Z94.3-07**  
**Variable Shade Infinitely**  
**Adjustable 9 – 13**  
**Switching Speed 0.000033**  
**Seconds**  
**Weld / Grind Mode Select Function**  
**Adjustable Sensitivity**  
**Adjustable Delay – Dark to Clear**  
**IR/UV Protection – up to shade DIN**  
**16 at all times**  
**Magnifyer lens holder**  
**Multi-Adjust Headgear for Welder**  
**Comfort**  
**Light Weight – 480 g (16.9 oz) - 2**  
**Year Warranty**



MODEL	STYLE
PWH9855G2	BLACK ART IN CLAMSHELL PKG



MODEL	STYLE
PWH9855G5	RED EAGLE IN CLAMSHELL PKG



MODEL	STYLE
PWH9855G6	CANADIAN IN CLAMSHELL PKG

## DELUXE SERIES

### TRUE-COLOR Technology

Viewing Area :  
98mm x 43mm  
(3.86" x 1.69")

Same features as Professional Models  
but with a smaller viewing area.



MODEL	STYLE
PWH9843	BLACK

MODEL	REPLACEMENT PARTS
PWHL1	OUTER LENS FOR ALL PWH98 HELMETS
PWHL2	INNER LENS FOR PWH9843 HELMETS
PWHL3	INNER LENS FOR PWH9855 HELMETS
PWHL4	INNER LENS FOR PWH9000 HELMETS
PWH187	SLOTTED HARD HAT ADAPTER SET
PWHHG	REPLACEMENT HEADGEAR PWH9843/9855
PWH188	HARD HAT ADAPTER FOR PWH9000 SERIES
PWHHG9000	HEADGEAR PWH9000 SERIES

# AUTO DARKENING HELMETS

## PROFESSIONAL SERIES

### TRUE-COLOR Technology

Viewing Area :  
98mm x 55mm (3.86" x 2.17")



MODEL	STYLE
PWH98551	CARBON FIBRE BLACK



MODEL	STYLE
PWH98552	CARBON FIBRE BLUE



MODEL	STYLE
PWH98553	CARBON FIBRE RED

## EXPERT SERIES AUTO DARKENING HELMETS

### TRUE-COLOR Technology

Viewing Area :  
100mm X 65mm (3.94" X 2.56")



MODEL	STYLE
PWH9000	BLACK



MODEL	STYLE
PWH9000G8	STEEL PLATE



MODEL	STYLE
PWH9000G9	REAL CAMO



MODEL	STYLE
PWH9000G3	RACE CAR

- Viewing Area: 3.94" X 2.56" (100mm X 65mm)
- Best in Class Optical Clarity 1/1/1/1
- Dual Adjustable Shade Ranges: 4-8 / 9-13
- Grind / Weld Modes
- 4 Independent Sensors
- Internal Controls
- Adjustable Sensitivity
- Adjustable Delay

- Lightweight - 460g (16.2 oz)
- Switching Speed 1/30,000 sec.
- Suitable for Low Amp TIG Applications Down to 5 Amps
- Standard Cover Plate 4-1/2" X 5-1/4" (114.5mm X 133.35mm)
- Suitable for Full Respirator
- Mag Lens Compatible
- Ultimate Comfort Headgear
- Conforms to ANSI Z87.1-2003 and Colts CSA Z94.3-07



**PWH9990**  
Digital Arc Master Helmet



An inside view  
of the Digital  
Arc Master  
PWH9990  
Helmet

## Powerweld Arc Master Auto-Darkening Welding Helmet

The intelligent helmet that adjusts  
protection automatically.

**Arc Sense Technology** automatically senses arc intensity and adjusts to the recommended shade  
**Digital Internal Controls** for easy adjustment of delay, sensitivity, shade and weld/cut mode  
**True Color Technology** with light state shade 3 provides the optimal view before and during your weld  
**2-Step Lens Delay Control** reduces eye strain and protects your eyes from unexpected flashes  
**Ultimate Comfort Headgear** with ratchet adjustment and dual headbands for a premium fit and feel  
**Large Viewing Area** with over 12.7 sq in view through the ADF  
**Hardhat Compatible** with adaptor headgear (sold separately)  
**Lightweight and Impact Resistant Shell** protects from heat and reduces neck strain  
**Meets ANSI Z87.1, CSA Z94.3, and CE EN379**

### Feature Focus:

- 1/1/1/1 optical clarity
- TIG rating > 2 amps
- Variable shade range 5-8 / 9-14
- Viewing Area 100mm x 82mm (3.94" x 3.23")
- Weight 599 g (1.32 lb)
- Light state shade 3
- 4 sensors
- External Weld/Grind quick change button
- Weld, grind, cut, and auto modes
- **3 Year Warranty on auto-darkening cartridge**



**PWHHG4510P**  
HEADGEAR COMPLETE  
PWH9990 / PWH4510P



**PWHSLA**  
HARD HAT SPEEDY  
LOOP ATTACH.  
PWH9990, PWH4510P



**PWHL5**  
LENS INNER FOR  
PWH9990 (PKG 5)

**PWHL6**  
LENS OUTER FOR  
PWH9990 (PKG 5)

# PASSIVE FILTER WELDING HELMETS



**PWH4510P**  
HELMET PASSIVE FILTER  
4.5 x 5.25 SHADE 10

- Lightweight and Impact Resistant Nylon/Glass- Fiber Shell weighing only 349 g provides maximum heat protection
- Ultimate Comfort Headgear with ratchet adjustment and dual headbands for a premium fit and feel
- Large 4-1/2" x 5-1/4" Viewing Area for a maximum field of vision
- Includes shade 10 filter lens
- Meets ANSI Z87.1, CSA Z94.3, and CE EN379 standards

## PIPELINE WELDING HELMETS



**PWH24PLFF**  
HELMET PIPELINE  
FIBERGLASS WHITE 2X4 FLIP

- Lightweight fiberglass shell - strong, impact-resistant, and moisture-proof
- Compact pipeliner design for tight-space access
- Standard 2" x 4.25" viewing area
- Includes shade 10 filter lens
- Meets ANSI Z87.1, CSA Z94.3, and CE EN175F standards



**PWH24PL**  
HELMET PIPELINE  
FIBERGLASS WHITE 2X4



**PWHHG24PL**  
REPLACEMENT HEADGEAR

# ECONOMY WELDING HELMETS



MODEL	STYLE
<b>WH754</b>	FIXED FRONT

**Model WH754** Fixed Front  
Style 5½" X 4¼"  
c/w adjustable head gear,  
clear & shade 11 lenses.



MODEL	STYLE
<b>WH750</b>	FLIP FRONT

**Model WH750** Flip Front  
Style 2" X 4¼"  
c/w adjustable head gear,  
clear & shade 11 lenses.



MODEL	STYLE
<b>WH752</b>	WIDE VISION FLIP FRONT

**Model WH752** Flip Front  
Style 5½" X 4¼"  
c/w adjustable head gear,  
clear & shade 11 lenses.



MODEL	STYLE
<b>WH622</b>	HAND SHIELD

**Model WH622** Fixed Front  
Style Hand Shield 2" X 4¼"  
c/w internal handle, clear &  
shade 11 lenses.

**ANSI Z87.1-1989 Approved - Excellent impact resistant polypropylene -  
Complete with headgear & lenses - individually boxed**

## HELMET ACCESSORIES



**PWLHB**  
HELMET BIB  
LEATHER  
UNIVERSAL  
WITH CLIPS



**PWFRHB**  
HELMET BIB  
FR COTTON  
UNIVERSAL  
WITH CLIPS



**PWAL01**  
AUXILIARY LIGHT  
FOR WELDING HELMET

The handy, lightweight helmet accessory is equipped with 2 arc sensors to automatically shut off the light as soon as the arc is struck, meaning your view of the weld isn't interfered with by unwanted light.

**Product Specifications:**

- Battery capacity: 700mAH (3.7v/USB-C)
- Battery life: 3H (high light) / 5H (mid light) / 8H (low light)
- Luminance: 3- level adjustable (max 100lm)
- Dimensions: 73x40x20mm (2.9"x 1.6" x 0.8")
- Cover lens dimensions: 12x38x1mm (0.5" x 1.5" x .040")
- Weight: 33g (1.16oz)
- Includes headlamp, USB x USB-C charging cable, two (2) bases with 3M adhesive and two (2) cover lenses

# WELDING & COVER GOGGLES

## WELDING GOGGLES



### CUP GOGGLE 50 MM

MODEL	LENSES
R600	SHADE #5 (50 MM)



### FLIP FRONT GOGGLE 50 MM

MODEL	LENSES
R850	SHADE #5 (50 MM)



### COVER GOGGLE 2 X 4 1/4"

MODEL	LENSES
R950	SHADE #5 (2 X 4 1/4")

**Powerweld** goggles feature soft comfortable sides, adjustable headband straps and air vents to reduce fogging. Provide protection from impact and IR/UV in flame cutting and brazing applications. All models meet or exceed ANSI Z87.1 standards.



### FLIP FRONT GOGGLE 2 X 4 1/4"

MODEL	LENSES
R900	SHADE #5 (2 X 4 1/4")

## COVER GOGGLES



### GRINDING GOGGLE CLEAR

MODEL	LENSES
R1140	POLYCARBONATE

### RGS STRAPS

MODEL	DESCRIPTION
RGS	REPLACEMENT STRAPS FOR ALL GOGGLES C/W CLIPS



### COVER GOGGLE

MODEL	LENSES
PW9905	SHADE #5 IR/UV SKI STYLE

# FILTER & COVER PLATES

## FILTER PLATES



- Provides ultimate protection from ultraviolet and infrared rays during the welding process
- Precision ground and edged to allow a proper and safe fit
- Optically correct and precisely shaded hardened glass
- ANSI Z87.1

	PART NO	SIZE	DESCRIPTION
<b>FILTERS</b>	<b>MP2H</b>	2 X 4 1/4	HARDENED GLASS FILTER SHADES 4-14 (50 PER BOX), EACH
	<b>MP4H</b>	4 1/2 X 5 1/4	HARDENED GLASS FILTER SHADES 4-14 (25 PER BOX), EACH
	<b>MP2PC</b>	2 X 4 1/4	POLYCARBONATE FILTER SHADES 8-12 (100 PER BOX), EACH
	<b>MP4PC</b>	4 1/2 X 5 1/4	POLYCARBONATE FILTER SHADES 8-12 (50 PER BOX), EACH
	<b>ML5H</b>	50 mm	HARDENED GLASS FILTER SHADES 4-6 (50 PER BOX), PAIR

## COVER LENS



	PART NO	SIZE	DESCRIPTION
<b>POLYCARBONATE</b>	<b>PP1</b>	2 X 4 1/4	SAFETY PLATE .060 - 100% POLYCARBONATE ANSI STAMPED - LENS IMPRINTED
	<b>PP2</b>	2 X 4 1/4	COVER PLATE .060 - 100% POLYCARBONATE
	<b>PP4</b>	4 1/2 X 5 1/4	COVER PLATE .060 - 100% POLYCARBONATE
	<b>PL5</b>	50 MM	COVER PLATE .060 - 100% POLYCARBONATE

2 X 4 1/4" & 50 MM 100 / BOX 500 / CASE 4 1/2 X 5 1/4" 25 / BOX 500 / CASE



	PART NO	SIZE	DESCRIPTION
<b>CR-39</b>	<b>PP2CR</b>	2 X 4 1/4	COVER PLATE .060 CR-39
	<b>PP4CR</b>	4 1/2 X 5 1/4	COVER PLATE .060 CR-39

2 X 4 1/4" 100 / BOX 500 / CASE 4 1/2 X 5 1/4" 50 / BOX 200 / CASE

	PART NO	SIZE	DESCRIPTION
<b>GLASS</b>	<b>GP2</b>	2 X 4 1/4	GLASS COVER PLATE, BULK PACKED (100 PER BOX)
	<b>GP4</b>	4 1/2 X 5 1/4	GLASS COVER PLATE, BULK PACKED (100 PER BOX), EACH
	<b>GL5</b>	2 X 4 1/4	GLASS COVER PLATE, BULK PACKED (100 PER BOX), PAIR

2 X 4 1/4" & 50 MM 100 / BOX 500 / CASE 4 1/2 X 5 1/4" 50 / BOX 400 / CASE

# MAGNIFIERS & AUTO CARTRIDGES

## MAGNIFIER - POLYCARBONATE

PART NO.	DESCRIPTION
<b>MAG-75</b>	Magnifier Plate Focol Power 0.75
<b>MAG-100</b>	Magnifier Plate Focol Power 1.00
<b>MAG-125</b>	Magnifier Plate Focol Power 1.25
<b>MAG-150</b>	Magnifier Plate Focol Power 1.50
<b>MAG-175</b>	Magnifier Plate Focol Power 1.75
<b>MAG-200</b>	Magnifier Plate Focol Power 2.00
<b>MAG-225</b>	Magnifier Plate Focol Power 2.25
<b>MAG-250</b>	Magnifier Plate Focol Power 2.50
<b>MAG-300</b>	Magnifier Plate Focol Power 3.00



## MAGNIFIER LENS SELECTOR CHART

AGE	FOCOL POWER
Up to 41	Focol Power 0.75
41 - 44	Focol Power 1.00
44 - 47	Focol Power 1.25
47 - 50	Focol Power 1.50
50 - 52	Focol Power 1.75
52 - 56	Focol Power 2.00
56 - 60	Focol Power 2.25
60 - over	Focol Power 2.50

## MAGNIFIER - GLASS



PART NO.	DESCRIPTION
<b>M75</b>	Magnifier Glass Plate 0.75 Focol Power- 2X4 ¼
<b>M100</b>	Magnifier Glass Plate 1.00 Focol Power- 2X4 ¼
<b>M125</b>	Magnifier Glass Plate 1.25 Focol Power- 2X4 ¼
<b>M150</b>	Magnifier Glass Plate 1.50 Focol Power- 2X4 ¼
<b>M175</b>	Magnifier Glass Plate 1.75 Focol Power- 2X4 ¼
<b>M200</b>	Magnifier Glass Plate 2.00 Focol Power- 2X4 ¼
<b>M225</b>	Magnifier Glass Plate 2.25 Focol Power- 2X4 ¼
<b>M250</b>	Magnifier Glass Plate 2.50 Focol Power- 2X4 ¼
<b>M300</b>	Magnifier Glass Plate 3.00 Focol Power- 2X4 ¼
<b>M350</b>	Magnifier Glass Plate 3.50 Focol Power- 2X4 ¼

## AUTO DARKENING CARTRIDGES

### TRUE-COLOR Technology



Solar powered cartridges fit most standard 2" X 4 ¼" helmets

2 arc sensors for reliable performance  
Dark state shade #10 or #11  
Light state shade #3  
Lens thickness 1/5" (5.0mm)  
Switching speed 0.5ms

MODEL	STYLE
<b>XG-HP10</b>	2" X 4 1/4" Shade #10

MODEL	STYLE
<b>XG-HP11</b>	2" X 4 1/4" Shade #11



MODEL	STYLE
<b>PWADF24V</b>	2" X 4-1/4" Variable Shade #5-13

**PWADF24V** variable shade drop-in cartridge is packed with features. Convert your standard 2" x 4-1/4" welding helmet into a full feature auto darkening helmet. True colour clear view technology presents your work in a whole new light! Customize your view with variable shades from 5-13, adjustable sensitivity, plus additional options with weld/grind mode and multiple delay settings including tack and 2-step modes.

# REPLACEMENT VISORS

All visors meet ANSI Z87.1 specifications

## UNIVERSAL STYLE



804UCL



804BCL



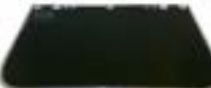
814ULG



814BLG



824UDG



824BDG



844UCL



844BCL



854ULG



854BLG



864UDG



864BDG

PART #	DESCRIPTION	SIZE
804UCL	Clear Unbound	8" x 12"
804BCL	Clear W/alum Band	8" x 12"
814ULG	Light Green Unbound	8" x 12"
814BLG	Light Green W/alum Band	8" x 12"
824UDG	Dark Green Unbound	8" x 12"
824BDG	Dark Green W/alum Band	8" x 12"
844UCL	Clear Unbound	9" x 15.5"
844BCL	Clear W/alum Band	9" x 15.5"
854ULG	Light Green Unbound	9" x 15.5"
854BLG	Light Green W/alum Band	9" x 15.5"
864UDG	Dark Green Unbound	9" x 15.5"
864BDG	Dark Green W/alum Band	9" x 15.5"

## FIBRE METAL® STYLE



4118C



4118DG



4178C



4178G



4199C



4199G



4199-05

PART #	DESCRIPTION	SIZE
4118C	Clear Visor	8" x 11"
4118DG	Green Visor	8" x 11"
4178C	Clear Visor	8" x 16.5"
4178G	Green Visor	8" x 16.5"
4199C	Clear Visor	9-3/4" x 19"
4199G	Green Visor	9-3/4" x 19"
4199-05	Green Visor Shade #5	9-3/4" x 19"

# SAFETY PRODUCTS

## SWEATBANDS

MODEL	DESCRIPTION
	
<b>PW3100V</b> FOR WELDING HELMET	<b>PW3200V</b> FOR HARD HAT

Our innovative sweatband design has made wearing a helmet more comfortable, no matter what time of year it is. The pad has been field tested in a variety of industries and is proven to reduce "helmet head", to improve grip, and to provide maximum perspiration absorption. Made of 100% fleecy cotton and flame retardant, this product features an air cushioned inner layer made of thousands of small cells to hold excessive perspiration and a hook & loop fasteners to fit all major brands of suspender (hard hats) or non-suspender (welding and face shields) type headgear.  
**2 per package**

## FACESHIELD HEADGEAR

### AUTO DARKENING LENS



- 02-0270-00 OUTER LENS AP/APC/APCV (5/PKG)
- 02-0280-00 INNER LENS AP/APC/APCV (5/PKG)
- 04-0270-00 OUTER LENS FOR 9000 SERIES SPEEDGLAS (10/PKG)
- 04-0280-00 INNER LENS FOR 9000X AND XF SERIES SPEEDGLAS (5/PKG)
- 04-0290-00 INNER LENS FOR 9000F AND V SERIES SPEEDGLAS (5/PKG)
- KP2897-1 LENS INSIDE LINCOLN® VIKING 5PK
- KP2898-1 LENS OUTER LINCOLN® VIKING 5PK
- KP2913-1 LENS OUTER LINCOLN® VIKING 5PK
- KP2931-1 LENS INSIDE LINCOLN® VIKING 5PK
- KP3043-1 LENS OUTER LINCOLN® VIKING 5PK
- KP3044-1 LENS INSIDE LINCOLN® VIKING 5PK
- M216-326 FRONT COVER LENS FOR MILLER® ELITE (5/PKG)
- M216-327 INSIDE COVER LENS FOR MILLER® ELITE (5/PKG)
- M231-410 INSIDE COVER LENS FOR MILLER® PRO-HOBBY (5/PKG)
- M231-411 FRONT COVER LENS FOR MILLER® PRO-HOBBY (5/PKG)
- M231-921 FRONT COVER LENS FOR MILLER® PROFROMANCE (5/PKG)
- M770-237 LENS INSIDE MILLER® XLI (5/PKG)
- M770-240 LENS FRONT MILLER® XLI (5/PKG)
- M770-241 LENS INSIDE MILLER® XLIX (5/PKG)



Headgear with ratchet adjustment

MODEL	STYLE
<b>PW700</b>	HEADGEAR

## GOLD FILTER PLATES

### GOLD-COATED POLYCARBONATE & GLASS FILTER PLATES



PART NO.	DESCRIPTION
<b>MP2GO</b>	2 x 4 1/4" Polycarbonate Plates Shades 9-12 Gold Coated, 50/box
<b>MP4GO</b>	4 1/2 X 5 1/4" Polycarbonate Plates Shades 9-12 Gold Coated, 25/box
<b>MP2GG</b>	2 x 4 1/4" Glass Plates Shades 9-12 Gold Coated, 100/box
<b>MP4GG</b>	4 1/2 X 5 1/4" Glass Plates Shades 9-12 Gold Coated, 50/box

# WELDING & WORK GLOVES

## WELDING GLOVE

### Features

- Pearl shoulder split cowhide. 14" length.
- Cotton lined for comfort.
- Weltd fingers protect cotton stitching.
- Lock stitched with cotton thread.

MODEL	STYLE
PW1001	WELDING



## WELDING GLOVE

### Features

- Durable blue shoulder split cowhide.
- 14" length.
- Insulated with cotton/foam lining for added heat protection.
- Reinforced thumb.
- Weltd fingers protect stitching.
- Lock stitched with Kevlar® thread for added strength.

MODEL	SIZE
PW1002	LARGE
PW1002S	SMALL



## WELDING GLOVE

### Features:

- Durable premium black/red side split cowhide
- 14" length
- Insulated with cotton/foam lining
- Reinforced thumb
- Weltd fingers protect stitching
- Lock stitched with Kevlar® thread for added strength

MODEL	STYLE
PW1003	WELDING



## TIG GLOVE

### Features:

- Lightweight pearl deerskin split leather enhances dexterity.
- Unlined for maximum feel.
- 4" cuff.
- Straight thumb for best gun grip.
- Lock stitched with Kevlar® thread for added strength.

MODEL	SIZE
PW2003M	MEDIUM
PW2003L	LARGE

## DRIVERS GLOVES

### Features:

- Top grain cowhide palm and split leather back
- Rolled cuff and elastic wristband
- Keystone thumb

MODEL	SIZE
PW1414M	MEDIUM
PW1414L	LARGE
PW1414XL	EXTRA LARGE



## WORK GLOVES

### Features:

- Economy/Industrial grade shoulder split
- Patch palm & knuckle strap.
- Canvas back
- Gunn cut with 2 1/2" safety starched cuff.
- Lock stitched for added strength.

MODEL	STYLE
PW3001	ECONOMY



## TIG GLOVE

### Features:

- Top grain pearl goatskin leather enhances feel and durability.
- 4" cuff.
- Wing thumb.
- Lock stitched with Kevlar® thread

MODEL	SIZE
PW2002S	SMALL
PW2002M	MEDIUM
PW2002L	LARGE
PW2002XL	X-LARGE



# PREMIUM TIG & MIG GLOVES

## TIG PREMIUM GOATSKIN GLOVE



### Features

Premium goatskin leather TIG welding gloves featuring a seamless index finger for smooth wire feeding and cowhide reinforcement at side of hand for extended protection and wear.

## MIG PREMIUM GLOVE



### Features

Soft goatskin with top grainsplit cowhide Reinforced palm Cowhide back with elastic Seamless index finger Lined for comfort Lock stitched with Kevlar® thread for added strength

MODEL	SIZE
PW2101M	Glove TIG Premium Goatskin Medium
PW2101L	Glove TIG Premium Goatskin Large
PW2101XL	Glove TIG Premium Goatskin X-Large

MODEL	SIZE
PW4000S	SMALL
PW4000M	MEDIUM
PW4000L	LARGE
PW4000XL	EXTRA LARGE

## MECHANIC GLOVES

Powerweld chooses the highest quality of premium top grain cowhide, goatskin, pigskin and deerskin for our mechanics gloves. Powerweld gloves are stitched with Kevlar® thread for added strength.

### PIGSKIN

### GOATSKIN

### COWHIDE

### DEERSKIN



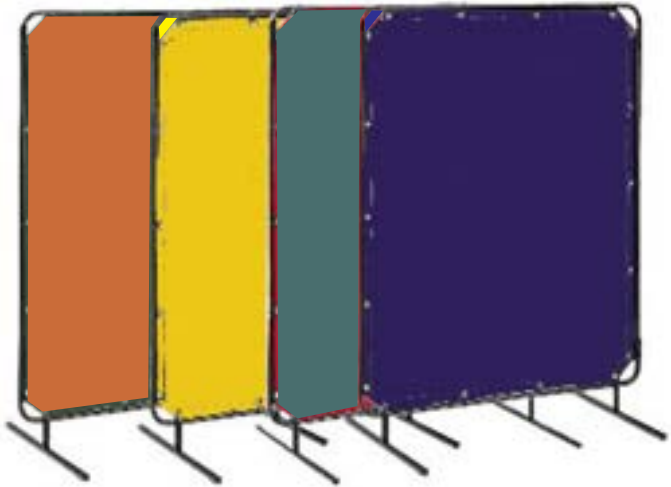
MODEL	STYLE
PW2660M	MEDIUM
PW2660L	LARGE
PW2660XL	X-LARGE

MODEL	STYLE
PW2670M	MEDIUM
PW2670L	LARGE
PW2670XL	X-LARGE

MODEL	STYLE
PW2680L	LARGE
PW2680XL	X- LARGE

MODEL	STYLE
PW2690L	LARGE
PW2690XL	X- LARGE

# WELDING CURTAINS & FRAMES



**Powerweld** offers a range of curtains designed to protect casual passers-by from harmful radiation in industrial working environments. Arcs and sparks generated from welding and grinding are harmful to the naked eye. **Powerweld** 14 mil transparent vinyl welding curtains allow those outside of the workspace protection during periods of short-term visibility, dispersing the light generated by the arc while allowing light back into the workspace. All curtains meet CE EN1598-2011, ensuring acceptable transparency, reflectance, IRUV protection and flame resistance. Curtain panels and frames are sold separately.



**PWRC66OR**  
**PWRC68OR**

Transparent Orange 6' x 6' Replacement Curtain  
Transparent Orange 6' x 8' Replacement Curtain



**PWRC66YE**  
**PWRC68YE**

Transparent Yellow 6' x 6' Replacement Curtain  
Transparent Yellow 6' x 8' Replacement Curtain



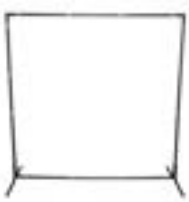
**PWRC66GR**  
**PWRC68GR**

Transparent Green 6' x 6' Replacement Curtain  
Transparent Green 6' x 8' Replacement Curtain



**PWRC66BL**  
**PWRC68BL**

Transparent Blue 6' x 6' Replacement Curtain  
Transparent Blue 6' x 8' Replacement Curtain



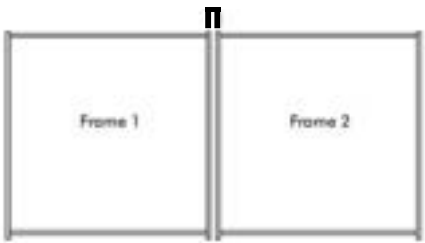
**PWFR66** Welding Curtain Frame 6' x 6'  
**PWFR68** Welding Curtain Frame 6' x 8'



**PWFRCS** Castor Set for Screen Frame (4)



**PWFR-CONNECT** Screen Frame Connector



# WELDING CLOTHING

PART NO.	DESCRIPTION
PW3280S-4XL	Leather Jacket 30" Small - 4XL
PW5330	Chaps leather 40"
PW9230S-4XL	Combo Jacket 30" Small to 4XLarge
PW4236	Bib Apron 24" X 36"
PW4242	Bib Apron 24" X 42"
PW3221S-3XL	Cape Sleeves S-3XL
PW9096	Combination Sleeves 19"
PW3120	Bib Apron for Cape Sleeves 20"
PW5200-23	Sleeves 23" Length (pair)
PW525	Leather Rod Pouch
PW527	Leather Spats 7" w/Velcro closure

**Powerweld** leather clothing is made from split cowhide for maximum durability and heavy duty protection. Designed to allow complete body movement and freedom while welding. All seams are sewn with Kevlar® thread which is double locked stitched to minimize seam burnout.



PW3280S-4XL

**Powerweld** leather welding jackets incorporate many additional features including:

- Heat and electrical insulated snaps.
- Inside pockets for extra use.
- Roll up collar with hook & loop closure.
- Welted shoulder seams.
- FR sateen lined collar/upper sleeves/shoulder provides comfortable skin contact and absorbs sweat.
- Reinforced double leather front snap panel.
- All stress points are rivetted.
- Adjustable snap cuffs.



Chaps leather 40" with adjustable straps

PW5330



PW9230S-4XL



PW4236  
PW4242



PW3221S-3XL



PW9096



PW3120



PW5200-23



PW525



PW527

## POWERWELD 9OZ FR COTTON JACKETS

**Powerweld** FR cotton welding jackets provide protection during welding while offering lightweight comfort. 9oz material is treated for flame resistance to standard ASTM 6413/ D6413M-12. Powerweld 30" length jackets feature rugged 5 snap front closures, adjustable cuffs, a generous internal pocket, plus a convenient sleeve pocket for scribes, markers or small tools. Sateen weave material provides comfortable movement. Machine washable, they retain their flame resistance for up to 50 home washes. Full range of sizes available in both traditional green, as well as high visibility orange.



**PWGFRJS**  
**PWGFRJM**  
**PWGFRJL**  
**PWGFRJXL**  
**PWGFRJXXL**  
**PWGFRJXXXL**  
**PWGFRJXXXXL**



**PWOFRJS**  
**PWOFRJM**  
**PWOFRJL**  
**PWOFRJXL**  
**PWOFRJXXL**  
**PWOFRJXXXL**  
**PWOFRJXXXXL**



**PWBFRJS**  
**PWBFRJM**  
**PWBFRJL**  
**PWBFRJXL**  
**PWBFRJXXL**  
**PWBFRJXXXL**  
**PWBFRJXXXXL**



**PWGFRSE**

### SLEEVES 18" W/ELASTIC CUFFS GREEN FR COTTON

- Lightweight 9oz Flame retardant cotton
- 18" Length
- Protects from sparks and spatter
- 2" Elastics cuffs at wrist and bicep for extra secure fit
- For light duty welding applications



**PWGFRS**

### SLEEVES 18" GREEN FR COTTON

- Lightweight 9oz Flame retardant cotton
- 18" Length
- Protects from sparks and spatter
- Elastics at wrist and bicep for secure fit
- For light duty welding applications



**PWGfra36**

### APRON 36" GREEN FR COTTON

- Lightweight 9oz Flame retardant cotton
- 24" W x 36" Length
- Protects from sparks and spatter
- Straps at waist and shoulder
- For light duty welding applications



**PWGFRH**

### HOOD FULL DRAPE GREEN FR COTTON

- Lightweight 9oz Flame retardant cotton
- Full hood with drape to protect chest and neck
- Protects from sparks and spatter
- Wear under helmet for added protection
- Hook and loop closure

## HI-VIZ SAFETY JACKETS

Powerweld Hi-Viz welding jackets provide additional visibility for working in hazardous environments. Available in two safety colors - bright orange and lime green. 2" wide silver reflective strips on front, back and sleeves increase visibility. An access slot on the back is provided for fall protection harness. 9oz sateen weave flame retardant cotton is lightweight and durable. Treated for flame resistance to standard ASTM 6413 / D6413M-12. Features snap closures and adjustable wrists.



- PWOHVL** JACKET FR ORANGE/REFLECTIVE HI-VIZ LARGE
- PWOHVM** JACKET FR ORANGE/REFLECTIVE HI-VIZ MEDIUM
- PWOHVS** JACKET FR ORANGE/REFLECTIVE HI-VIZ SMALL
- PWOHVXL** JACKET FR ORANGE/REFLECTIVE HI-VIZ X-LARGE
- PWOHVXXL** JACKET FR ORANGE/REFLECTIVE HI-VIZ XX-LARGE
- PWOHVXXXL** JACKET FR ORANGE/REFLECTIVE HI-VIZ XXX-LARGE
- PWOHVXXXXL** JACKET FR ORANGE/REFLECTIVE HI-VIZ XXXX-LARGE



- PWGHVL** JACKET FR LIME-GREEN/REFLECTIVE HI-VIZ LARGE
- PWGHVM** JACKET FR LIME-GREEN/REFLECTIVE HI-VIZ MEDIUM
- PWGHVS** JACKET FR LIME-GREEN/REFLECTIVE HI-VIZ SMALL
- PWGHVXL** JACKET FR LIME-GREEN/REFLECTIVE HI-VIZ X-LARGE
- PWGHVXXL** JACKET FR LIME-GREEN/REFLECTIVE HI-VIZ XX-LARGE
- PWGHVXXXL** JACKET FR LIME-GREEN/REFLECTIVE HI-VIZ XXX-LARGE
- PWGHVXXXXL** JACKET FR LIME-GREEN/REFLECTIVE HI-VIZ XXXX-LARGE

# WELDING BLANKETS



## LIGHT DUTY

MODEL	SIZE
PW18B66UC	6' X 6'
PW18B68UC	6' X 8'
PW18B810UC	8' X 10'
PW18B4050UC	40"w X 50 Yard Roll
PW18B6050UC	60"w X 50 Yard Roll

**PW18B** - 18oz uncoated heat treated Tan fiberglass welding blankets

- Suitable for light duty applications
- Service Temperature: 550°C / 1022°F
- Melting Temperature: 1200°C / 2192°F
- Grommets on 18" (45mm) centers on all sides
- Kevlar® stitched hems

### Suitable usage:

- Welding vertical with light sparks and spatter
- Heat treating
- Designed for maximum flexibility using low irritating yarns

### Popular applications:

- Auto repair shop or home garage
- General light fabrication



## MEDIUM DUTY

MODEL	SIZE
PW24B66	6' X 6'
PW24B68	6' X 8'
PW24B810	8' X 10'
PW24B1010	10' X 10'
PW24B4050	40"w X 50 Yard Roll
PW24B6050	60"w X 50 Yard Roll

**PW24B** - 24oz acrylic Gold coated fiberglass welding blankets

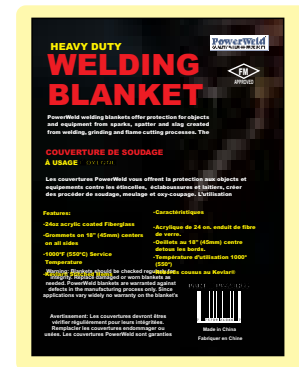
- Suitable for medium duty applications
- Service Temperature: 550°C / 1022°F
- Melting Temperature: 1200°C / 2192°F
- Grommets on 18" (45mm) centers on all sides
- Kevlar® stitched hems

### Suitable usage:

- General purpose welding with sparks and spatter
- Grinding and flame cutting
- Light slag protection

### Popular applications:

- Auto repair shop
- General fabrication
- Most popular blanket for general protection from sparks and spatter during welding and grinding



## HEAVY DUTY

MODEL	SIZE
PW18SIB66	6' X 6'
PW18SIB68	6' X 8'

**PW18SIB** - 18oz silica coated Bronze fiberglass welding blankets

- Suitable for heavy duty applications
- Service Temperature: 900°C / 1652°F
- Melting Temperature: 1700°C / 3000°F

- Grommets on 18" (45mm) centers on all sides
- Kevlar® stitched hems

### Suitable usage:

- Heavy duty welding with sparks and spatter
- Grinding and flame cutting
- Furnace blanket
- Slag protection
- Heat treating
- Stress relief up to 1700°F

### Popular applications:

- Heavy sparks and spatter
- Molten metal
- Thermal insulation

## LIGHT DUTY

MODEL	SIZE
PW17B6050	60"w X 50 Yard Roll

**PW17B** - 17oz Red Silicone coated fiberglass welding blankets

- Suitable for light duty applications
- Service Temperature: 550°C / 1022°F
- Melting Temperature: 1200°C / 2192°F

### Suitable usage:

- General purpose welding with light sparks and spatter
- Grinding and flame cutting
- Light slag protection
- Greater resistance to oil and water, puncture and tear than other materials

### Popular applications:

- Oil and gas, refineries
- Expansion joints
- High-temperature insulation
- Heat shield and containment



## MEDIUM DUTY

MODEL	SIZE
PW32B6050	60"w X 50 Yard Roll

**PW32B** - 32oz Red silicone coated fiberglass welding blankets

- Suitable for medium duty applications
- Service Temperature: 550°C / 1022°F
- Melting Temperature: 1200°C / 2192°F

### Suitable usage:

- General purpose welding with sparks and spatter
- Grinding and flame cutting
- Light slag protection
- Horizontal weld protection
- Greater resistance to oil and water, puncture and tear than other materials
- Abrasion resistant

### Popular applications:

- Oil and gas, refineries
- Expansion joints
- Equipment covers
- High-temperature insulation
- Heat shield and containment

## FIRE BLANKET

MODEL	SIZE
PWFB46 Fire Blanket	4'X6' In Pouch



# SAFETY SUPPLIES

## WELDER'S ESSENTIALS KIT



### Welding Helmet & GearBag

- Auto Darkening Helmet Variable
- Shade 9 - 13
- Welders Gloves
- Chipping Hammer
- Positioning Magnet
- Welding Cup Goggles
- Standard Tip Cleaner
- Single Flint Lighter
- Clear Safety Spectacles
- Wire Scratch Brush
- Soapstone and Holder
- MIG Welders Pliers

MODEL	STYLE
WEKIT	KIT

## BACK HAND PADS

### HELMET BAG



**Powerweld** heavy duty helmet & gear bag

Store helmet, gloves, and other tools in a safe place.

Drawstring closure & shoulder carrying strap.

MODEL	STYLE
PWHB	BAG



MODEL	DESCRIPTION
PWBHP01	Double Layer Protection
PWBHP02	Triple Layer Protection

Worn over the back of a welding glove, Powerweld back hand pads provide added protection while welding. The aluminized layer reflects radiant heat to keep the hand cooler while increasing the life of your gloves by protecting them from sparks and spatter.

# SAFETY SUPPLIES

## EXPERT WELDER'S KIT



- PWH9000 Expert Helmet
- PW9230 Combo jacket (S - XXXXL)
- PW1002 Stick Gloves
- PW2002 TIG Gloves (S - XL)
- PWDUFFLE Duffle Bag
- PWFSH Flat Soapstone Holder
- TC-1 Tip Cleaner
- 1501 Striker
- 50000 Clear Jackson SG specs
- 50010 5.0 Jackson SG specs
- YS-50 MIG Pliers
- 85045 Wire Brush
- RLH-1 Chipping Hammer
- MG-11 Fillet Weld Gauge
- PWBEANIE Beanie
- PWGFT Gas Flow Tester

MODEL	STYLE
PWXPKIT	KIT

## INDUSTRIAL DUFFLE BAG

### Features:

- Dimensions: 24 x 12 x 12 inches
- Fabric resists wear and abrasion
- Three exterior pockets for welding accessories
- Includes a shoulder strap
- Added exterior usage leaves more room inside the bag for other items




MODEL	STYLE
PWDUFFLE	GEAR BAG

# FILLET WELD GAUGES


**Powerweld** fillet weld gauges are precision inspection tools designed to ensure quality and accuracy. Several models to choose from cover many applications. Features include:

- Precision gauge
- Constructed of rust proof 22 gauge type 304 steel.
- Die blanked to eliminate sharp edges - adds to accuracy.
- Permanently etched lettering for long life and abrasion resistance.




- Angle of preparation, 0° to 60°.
- Excess weld metal (capping size).
- Depth of undercut.
- Depth of pitting.
- Fillet weld throat size.
- Fillet weld length.
- Misalignment (high-low).

MODEL	STYLE
MG-8	BRIDGE CAM




MODEL	STYLE
MG-5M	PIT DEPTH

- Check undercut
- Check pit depth
- Check porosity




MODEL	STYLE
MG-11	FILLET

- The fillet weld gauge allows fast, accurate measurement of eleven (11) fillet weld sizes: 1/8", 3/16", 1/4", 5/16", 3/8", 7/16", 1/2", 5/8", 3/4", 7/8", and 1", and their metric equivalents, to determine weld sizes, either concave or convex.
- Each gauge blade is made of 1-1/4 "x 4" stainless steel to resist rust and bending.
- Blades are deburred to remove rough edges.
- All sizes and numerals are engraved into the surface for easier reading.



MODEL	STYLE
WG-06HILO	HI LO

- Slim design.
- Changes from standard to metric - simply remove gauge body, turn scales over and replace body.
- Measurements read in standard on one side & metric on opposite side.
- Measures internal alignment of pipe after fit-up/alignment, and cuts radiographic rejects.
- Measures internal misalignment of pipe before and after tacking.
- Measures bevel on end preparation.
- This handy devise even measures scribe lines, socket welds, crown height of welds & fillet weld size.



MODEL	STYLE
DSG-01	DIGITAL

- Accurate readings instantly.
- Easy to read digital display.
- Zero setting at any position.
- Metric / Imperial system conversion any position.
- The digital welding gauge is equipped with an output port.
- Data can be input into a computer or a printer via special connecting cable.

**Resolution:** 0.01mm/0.0005"

**Range:** 0-12.7mm

**Error:** +/- 0.03mm +/- 0.001"

**Operating Power:** One silver oxide battery SR44, 1.55V (Included)

**Working Temperature:** 0°C to +40°C


**Humidity:** <80%

**Storage Temperature:** -10°C to +60°C



MODEL	STYLE
WG-07SFG	SKEW-T

- For checking angle of vertical member.
- For checking weld acute side.
- For checking weld obtuse side.



MODEL	STYLE
MG-6	AUTOMATIC

- Check reinforcement
- Check the throat of fillet weld
- Determine the leg size of the fillet weld

# LOCKING PLIERS

**Powerweld** locking pliers and c-clamps are made from nickel plated chrome vanadium steel for toughness and durability. Smooth turning screw adjustment provides maximum pressure and grip. C-clamp models are available with standard or swivel pad tips. Trigger release design for quick removal.



Locking Plier 6"  
Long Nose w/Cutter  
**PW6LN**



Locking Plier 7"  
w/Curved Jaw/Cutter  
**PW7WR**



Locking Plier 10"  
w/Curved Jaw/Cutter  
**PW10WR**



Locking C Clamp  
6" STD  
**PW6R**



Locking C Clamp 6"  
w/Swivel Pads  
**PW6SP**



Locking C Clamp 11" STD  
**PW11R**



Locking C Clamp 11"  
w/Swivel Pads  
**PW11SP**



Locking C Clamp 18" STD  
**PW18R**



Locking C Clamp  
18" w/Swivel Pads  
**PW18SP**



Locking Chain  
Clamp  
**PW20R**

# TOOLS & ACCESSORIES

## CABLE HITCH



MODEL	STYLE
CH-240	CABLE HITCH

Cable Hitch allows you to support heavy long lengths of welding cable by hanging it on its handy hook assembly. Comes with a non-slip locking assembly.

## NOZZLE REAMER



MODEL	STYLE
REAMER	MANUAL

- Cleans hot MIG nozzles on the torch
- Self adjusting to fit all sizes
- Expanding spring steel cleaning blades

## BATTERY CLAMPS



MODEL	STYLE
BCR-600	RED
BCB-600	BLACK

Heavy duty 600 amp battery clamps with red handles for positive and black handles for negative



## TORCH HOLDERS



TIG torch holder with magnetic base

MODEL	STYLE
MI-TTS-M	TIG



Electrode holder with magnetic base

MODEL	STYLE
MI-EHS-M	ARC

## TUNGSTEN HOLDER



Chuck keeps positive on tungsten while sharpening

MODEL	SIZE
PWTH	1/6" - 5/32"



MIG torch holder with magnetic base

MODEL	STYLE
MI-MTS-M	MIG

## MAGNETS

- Multi-purpose holders for assembly and positioning. Adheres to most metal objects
- Ideal for welding, soldering, assembly and pipe installation
- Angles of 45°, 90° and 135°



Positioning magnet  
Small 25# capacity

MODEL	SIZE
M061	3" x 3"



Positioning magnet  
Medium 50# capacity

MODEL	SIZE
M062	4" x 4"



Positioning magnet  
Large 75# capacity

MODEL	SIZE
M063	5" x 5"

## SWITCHABLE MAGNETS



Angle Dual Switch  
Magnet - Medium  
**PWAMAG-M**



Magnetic Switchable  
Ground Clamp - 300 amp  
**PWMGC-300**



Magnetic Switchable  
Ground Clamp - 600 amp  
**PWMGC-600**



Angle Switchable  
Magnet - Medium  
**PWSMAG-M**



Angle Switchable  
Magnet - Large  
**PWSMAG-L**



Angle Magnet Single  
Switch Medium  
**PWSSMAG-30**



Angle Magnet Single  
Switch Large  
**PWSSMAG-55**

# TOOLS & ACCESSORIES

## SPOOL ADAPTOR



**Universal 4" - 1 & 2 lb  
Spool Adaptor**

The universal welding wire spool adaptor quickly adapts most wire feeders and integrated MIG machines to use 4" (1 & 2 lb) spools without removing or altering the spindle assembly.

MODEL	TYPE
SA-1	UNIVERSAL

## TIG ACCESSORY KITS



### TIG Accessory Kits

Contain a selection of components plus Ceriated tungsten electrodes to prepare your TIG torch for immediate welding. Select kits are available for the most popular series of TIG torches on the market.

MODEL	TORCH SERIES	TUNGSTEN DIA
PWAK-1	9	.040", 1/16"
PWAK-2	17	.040", 1/16", 3/32"
PWAK-3	18, 26	1/16", 3/32", 1/8"
PWAK-4	20	1/16", 3/32", 1/8"

## WELDING TABLE

- Welding workbench can be used anywhere - home, shop or in the field
- Folds up easily for storage or transportation
- Large work area of galvanized welded mesh 24" X 40" (61cm X 101cm)
- Work height of 36" (914cm)
- Heavy duty construction - 600lb (272kg) weight capacity



### Welder's Bench Applications

Welding, pipe work, painters, machine shops, auto service shipping & receiving, assembly work, cut off & mitre saws.

MODEL	STYLE
WB2440	WELDING TABLE

## TIG FINGER FEEDER



Feeds TIG filler rod comfortably. Hold the feeder like a pen or pencil. Insert the TIG filler wire from the rear of the unit – not from the front. With the feeder comfortable in your hand, advance the wire by rolling the rubber wheel with the tip of your index finger. Suitable for TIG wire diameters 0.8mm (.030") to 3.2mm (1/8").

MODEL	STYLE
PW1550	TIG FINGER FEEDER

## WELDER'S PLIERS



### Welders Multi-Use Tool

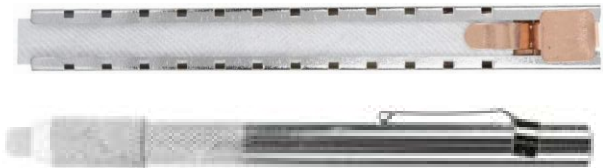
- Eight-way pliers
- Nickel plated finish
- Ideally suited for removal of hot spatter from nozzle ends

MODEL	STYLE
YS-50	MIG PLIERS
YS-H	PLIERS HOLSTER



Pliers Holster

## SOAPSTONE HOLDERS



- Chrome plated steel holder for soapstone
- Copper trigger slides and locks for soapstone positioning
- Spring steel pocket clip
- Includes soapstone

MODEL	STYLE
PWFSH	FLAT HOLDER
PWRSH	ROUND HOLDER

# TOOLS & ACCESSORIES

## SOAPSTONE CRAYONS



White #1 select soapstone  
144 pieces per box  
12 boxes per case

MODEL	STYLE
FS1	FLAT
RS1	ROUND

## CABLE CUTTER



Cable Cutter, Shear Cut, Overall Length 9-1/4 In., Handle Design Dipped, Features High Leverage Design for Superior Cutting Ability, Designed with a Shear-Type Jaw for Cutting Aluminum and Soft Copper (Not for Use on Steel or ACSR type Cables), Cuts up to 100-Pair Cables, Made of Chrome Vanadium Steel

MODEL	STYLE
PW52	CABLE CUTTER

## BASTARD FILE



MODEL	STYLE
PWHRB14	BASTARD FILE

Rounded on one side, flat on the other. Ideal for rounding out holes, files can be used on concave, convex, and flat surfaces. Rapidly removes material but leaves a smooth finish.  
14" in length - Double cut on both sides.

## WIRE BRUSHES



85047



85045



85050



85053



85051



85048



85055



85056

MODEL	DESCRIPTION
85047	CURVED HANDLE S.S. 3X19" ROWS
85045	CURVED HANDLE C.S. 3X19" ROWS
85051	SHOE HANDLE C.S. 4X16" ROWS
85053	SHOE HANDLE S.S. 4X16" ROWS
85055	TOOTHBRUSH S.S. 3X7" ROWS
85050	CURVED HANDLE S.S. 4X19" ROWS
85048	CURVED HANDLE C.S. 4X19" ROWS
85056	TOOTHBRUSH BRONZE 3X7" ROWS

C.S. = Carbon Steel S.S. = Stainless Steel

# PIPE EQUIPMENT

## HEAVY DUTY LARGE PIPE STANDS



- Standard Features
- Low Position Height: 32" (810 mm)
  - Max Position Height: 52" (1320 mm)
  - Footprint Width: 33.5" (850 mm)
  - Weight: 29 lbs (13.2 kg)
  - Pipe Diameter Capacity: up to 24" (600 mm)
  - Load Capacity: 3500 lbs (1600 kg)

**PWLPS-RH**  
(with Roller Head)



- Standard Features
- Low Position Height: 32" (810 mm)
  - Max Position Height: 52" (1320 mm)
  - Footprint Width: 33.5" (850 mm)
  - Weight: 29 lbs (13.2 kg)
  - Pipe Diameter Capacity: up to 24" (600 mm)
  - Load Capacity: 4000 lbs (1815 kg)

**PWLPS**  
(with V-Head)

## HEAVY DUTY MEDIUM PIPE STAND



- Standard Features
- Low Position Height: 26" (660 mm)
  - Max Position Height: 36" (910 mm)
  - Footprint Width: 27" (685 mm)
  - Weight: 25 lbs (11.3 kg)
  - Pipe Diameter Capacity: up to 24" (600 mm)
  - Load Capacity: 4000 lbs (1815 kg)

**PWMPS** (with V-Head)  
**PWMPS-RH** (with Roller Head)

## STANDARD PIPE STANDS



- Standard Features
- Low Position Height: 28.5" (730 mm)
  - Max Position Height: 50.0" (1270 mm)
  - Footprint Width: 22" (560 mm)
  - Weight: 23 lbs (10.5 kg)
  - Pipe Diameter Capacity: up to 24" (600 mm)
  - Load Capacity: 2500 lbs (1135 kg)

**PWSPS**  
(with V-Head)



- Standard Features
- Low Position Height: 28.5" (730 mm)
  - Max Position Height: 50.0" (1270 mm)
  - Footprint Width: 22" (560 mm)
  - Weight: 23 lbs (10.5 kg)
  - Pipe Diameter Capacity: up to 24" (600 mm)
  - Load Capacity: 2500 lbs (1135 kg)

**PWSPS-RH**  
(with Roller Head)

MODEL	DESCRIPTION
PWLPS	HEAVY DUTY LARGE W/ V HEAD
PWLPS-RH	HEAVY DUTY LARGE W/ ROLLER HEAD
PWMPS	HEAVY DUTY MEDIUM W/V HEAD
PWMPS-RH	HEAVY DUTY MEDIUM W/ ROLLER HEAD
PWSPS	STANDARD W/V HEAD
PWSPS-RH	STANDARD WITH ROLLER HEAD
PW24RH	HD ROLLER HEAD
PW24VH	HD V HEAD



## HEAVY DUTY ROLLER HEAD

- Standard Features
- Load Capacity: 3500 lbs (1385 kg)
  - Pipe Diameter Capacity: 2" to 24" (50 mm to 600 mm)

**PW24RH**

**Powerweld** heavy duty pipe stands are packed with features to provide safety and ruggedness on any jobsite. A wide base footprint keeps the stand stable under load. The reinforced vee-head included on heavy-duty versions prevents bending and is rated at 4000 lbs (1815 kg) capacity. High visibility orange for safety. Stands fold up for easy storage or transportation. T-handle to secure head in place plus safety pin. Carry handle built in for convenience. Safety ratio 3:1

# TOOLS & ACCESSORIES

## C CLAMPS



MODEL	SIZE	THROAT DEPTH
402	2"	2.25"
404	4"	3.25"
406	6"	4.00"
408	8"	5.00"
410	10"	6.00"
412	12"	6.50"

Features: Rugged, heavy duty drop forged steel frame. Steel spindles are tough-hardened. New design frame for maximum strength. Lacquered finish. Steel swivel pads adjust freely to bear evenly on clamped part. Precision cut, single lead Acme thread for smooth operation. Steel spindles are copper plated for spatter protection. Never needs greasing; dry lubricated for smooth operation. Extra throat depth.

## F CLAMPS



MODEL	SIZE (")	SIZE (mm)
F-1200-8	8"	200mm
F-1200-10	10"	250mm
F-1200-12	12"	300mm
F-1200-16	16"	400mm
F-1200-20	20"	500mm
F-1200-24	24"	600mm
F-1200-39	39"	990mm

Features: 1200kg (2600lb) capacity. Tempered steel sliding arm. Drop forged, electro-galvanized. Rail, fixed jaws and pressure plate heat-formed in one piece from cold drawn profiled steel, optimized for high static stress loadings. Heat treated, high carbon Acme threaded screw is tempered and quenched to give you greater loading capacity and longer service life. Spatter resistant. Throat depth 5½" (140mm)

## THERMOMETERS



Measuring Range: -30°C to 260°C  
 Measuring Range: -22°F to 500°F  
 Built in laser pointer  
 Field of View: 8:1  
 Fast sampling time: less than 1 second  
 Automatic selection range and resolution  
 Backlit display  
 °C/°F switchable  
 Auto data-hold  
 Auto power off 8 seconds  
 Complete with 9V battery and carry pouch  
 One year warranty  
 Dimensions: 131mm x 96mm x 35mm  
 Weight: 130g

MODEL	STYLE
DT-810	COMPACT

Wide measuring range -50°C to 500°C  
 -58°F to 932°F  
 Built in laser pointer  
 Super large 3 ½ Digit (1999 counts) multifunction LCD  
 Backlit display  
 °C/°F switchable  
 Overload indication and beeper  
 Fast sampling time  
 Auto data-hold and power off  
 Fixed emissivity (0.95) covers 90% of surface applications.  
 Narrow 8:1 field of view  
 Automatic selection range and resolution  
 Complete with 9V battery & carry pouch  
 One year warranty  
 Dimensions: 159x79x57.2mm  
 Weight: 190g



MODEL	STYLE
DT-8812	DELUXE

# TOOLS & ACCESSORIES

## RAP-AROUNDS



- PWRA150** SMALL - 2.5" WIDE X 2' LENGTH - 1" X 3" PIPE
- PWRA160** MEDIUM - 4" WIDE X 4' LENGTH - 3" X 6" PIPE
- PWRA170** LARGE - 4" WIDE X 6' LENGTH - 3" X 10" PIPE
- PWRA177** XLARGE - 4" WIDE X 7' LENGTH - 6" X 14" PIPE
- PWRA179** XXLARGE - 4" WIDE X 9' LENGTH - 8" X 18" PIPE
- PWRA184** BULK 4" WIDE
- PWRA185** BULK 5" WIDE
- PWRA187** BULK 7" WIDE

Powerweld Rap-Arounds help welders and pipe fitters layout pipe with ease. Rugged, non-asbestos material withstands heat and abrasion. Sizes Medium to XX-large are marked – double ruled so that both top and bottom surfaces can be used for layouts – never upside down!

## TIG CABLE COVERS



Nylon covers with zippered closure  
3" and 4" widths

MODEL	DESCRIPTION
<b>PWCCL10</b>	CABLE COVER LEATHER 10' SNAP
<b>PWCCL22</b>	CABLE COVER LEATHER 22' SNAP
<b>PWCCL10V</b>	CABLE COVER LEATHER 10' VELCRO
<b>PWCCL22V</b>	CABLE COVER LEATHER 22' VELCRO

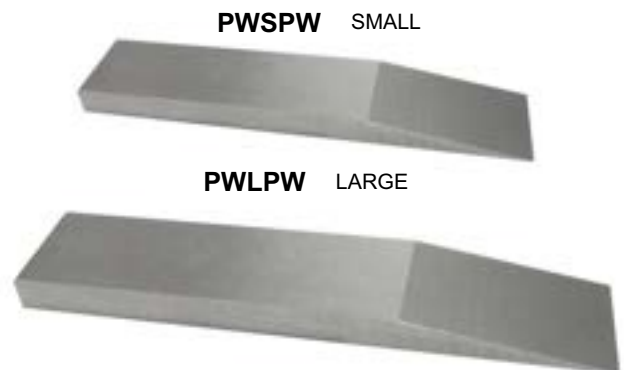
3m (10') Cable Cover      6.7m (22') Cable Cover

MODEL	STYLE	MODEL	STYLE
<b>WC-3-10</b>	3" X 10' (3m)	<b>WC-3-22</b>	3" X 22' (6.7m)
<b>WC-4-10</b>	4" X 10' (3m)	<b>WC-4-22</b>	4" X 22' (6.7m)

## PIPE WEDGES

**Powerweld Pipe - Spacing Wedges** are manufactured of high strength heat treated carbon steel. Use for creating precise weld gap during fit-up. Available in two sizes they accommodate small to large diameter pipe.

Small pipe wedge 3/4" X 3-1/2" X 1/4" (19mm x 90mm x 6mm)  
Large pipe wedge 1-1/2" X 8" X 1/4" (38mm x 200mm x 6mm)



# TOOLS & ACCESSORIES

## HEAVY DUTY EXTENSION CORDS

**Super flex extension cord** - Super flexible, type SJTW outdoor cord. Lightweight-stays flexible to -67°F. 3 conductor grounded cord 15 Amps, 125V. Resistant to abrasions, oil, grease & chemicals. UL & ULC listed. Features power indicator in female receptacle to show that the power is on. Available in 25ft, 50 ft and 100 ft lengths. Three high-visibility colours to choose from.



MODEL	TYPE
EC25-YE	YELLOW JACKET 25' (8/CASE)
EC50-YE	YELLOW JACKET 50' (6/CASE)
EC100-YE	YELLOW JACKET 100' (4/CASE)



MODEL	TYPE
EC25-BL	BLUE JACKET 25 (8/CASE)
EC50-BL	BLUE JACKET 50' (6/CASE)
EC100-BL	BLUE JACKET 100' (4/CASE)



MODEL	TYPE
EC25-OR	ORANGE JACKET 25' (8/CASE)
EC50-OR	ORANGE JACKET 50' (6/CASE)
EC100-OR	ORANGE JACKET 100' (4/CASE)



MODEL	TYPE
EC50TT-YE	YELLOW JACKET 50' (6/CASE) TRIPLE TAP
EC100TT-YE	YELLOW JACKET 100' (4/CASE) TRIPLE TAP

## 8/3 TYPE STW 250V



### Welder Power Cable Extension

NEMA 6-50 plug & receptacle  
25' & 50' water resistant assembly  
8/3 Type STW 40A-250V  
Safety lighted ends



MODEL	TYPE
PCE-25	SAFETY LIGHTED 25' (4/CASE)
PCE-50	SAFETY LIGHTED 50' (2/CASE)
PCE-80	SAFETY LIGHTED 80' (1/CASE)

## ELECTRODE OVEN



**PWOV20**  
Powerweld Portable  
Electrode Oven  
20lb capacity

• Electrode Capacity	20 lbs
• Electrode Size	up to 18"
• Input Supply	110V, 250W, 50/60HZ
• Temperature Range	302°F MAX.
• Height	25.6"
• Outer Diameter	8.0"
• Inner Chamber Diameter	5.7"
• Inner Chamber Depth	19.0"
• Unit Weight	13.7 lbs

This Powerweld portable electrode oven is built jobsite tough. Keeps electrodes moisture free in the shop or in the field. Easy access to electrodes with the rod lifter. Large adjustable dial thermostat on the front for convenience - adjust temperature without removing your glove. Indicator light to show power is on.

# TOOLS & ACCESSORIES

## BUTANE TORCH



BUTANE TORCH	
MODEL	STYLE
PW2020	BUTANE GAS



SOLDERING HEAD	
MODEL	STYLE
SH11	BUTANE GAS



HOT REFLECTOR	
MODEL	STYLE
SA51	BUTANE GAS

HOT BLOWER HEAD	
MODEL	STYLE
SH51	BUTANE GAS



**Powerweld Butane Gas Micro Torch PW2020**  
 Electronic instant ignition system  
 Adjustable flame  
 Refillable butane fuel  
 Max attainable temperature 2370°F  
 Safety ignition lock

## GAS FLOW TESTER



**Shield Gas Flow Tester.**  
 This easy to use device will take the guesswork out of optimizing your welds, and save on shield gas cost. The unit measures Argon and CO2 Flow Rates up to 50 CFH (24 LPM)

MODEL	STYLE
PWGFT	GAS FLOW TESTER

## GAS SAVER



Saves time and reduces gas cost

GAS SAVER	
MODEL	STYLE
GS-150	ACET OR LPG

## LIGHTER

**Lightnin Bug Striker**

MODEL	STYLE
PW08-100	PIEZO STRIKER



# STRINGER BEAD WHEELS & CUP BRUSHES

## CUP BRUSHES



Powerweld cup brushes are designed for cleaning large surface areas. They remove rust, paint and scale and are used for general surface finishing.

Item #	Diameter	Wire Type	Trim Length	Wire Size	Arbor	Max RPM
PWCB3K58	3" (75 mm)	Mild Steel	1" (25 mm)	.020" (0.5 mm)	5/8"-11	14000
PWCB3K58SS	3" (75 mm)	<b>Stainless Steel</b>	1" (25 mm)	.020" (0.5 mm)	5/8"-11	14000
PWCB4K58	4" (100 mm)	Mild Steel	1-1/8" (30 mm)	.020" (0.5 mm)	5/8"-11	9000
PWCB5K58	5" (125 mm)	Mild Steel	1-1/8" (30 mm)	.020" (0.5 mm)	5/8"-11	6500

## STRINGER BEAD WHEELS



MODEL	STYLE
<b>PWSB458</b>	STRINGER BEAD 4" X 5/8-11
<b>PWSB458SS</b>	STRINGER BEAD 4" X 5/8-11 <b>STAINLESS STEEL</b>

MODEL	STYLE
<b>PWSB558</b>	STRINGER BEAD 5" X 5/8-11
<b>PWSB558SS</b>	STRINGER BEAD 5" X 5/8-11 <b>STAINLESS STEEL</b>

MODEL	STYLE
<b>PWSB658</b>	STRINGER BEAD 6" X 5/8-11
<b>PWSB658SS</b>	STRINGER BEAD 6" X 5/8-11 <b>STAINLESS STEEL</b>

MODEL	STYLE
<b>PWSB6558</b>	STRINGER BEAD 6-1/2" X 5/8-11

Powerweld stringer bead wheel brushes provide aggressive cleaning and fast material removal. Suitable for root and hot pass welds. Narrow face for confined and hard to reach areas. .020 diameter Carbon Steel Wire or 304 Stainless Steel.

## END BRUSHES

Powerweld knotted end brushes are used for cleaning and deburring pipe and hard to reach spaces. End brushes come with a 1/4" shank for universal mounting.



**PWEBK118**  
END BRUSH KNOT  
1-1/8" DIA .014 STEEL  
WIRE 1/4" SHANK  
MAX RPM 22,000



**PWEBK118SS**  
END BRUSH KNOT  
1-1/8" DIA .014 STAINLESS  
1/4" SHANK  
MAX RPM 22,000

## REFLEX ABRASIVES

### DEPRESSED CENTER

#### TYPE 27 FOR STEEL

<b>RX116.00.25</b>	A24R	4 1/2" X 1/4" X 7/8"
<b>RX126.00.25</b>	A24R	5" X 1/4" X 7/8"
<b>RX176.00.25</b>	A24R	7" X 1/4" X 7/8"
<b>RX113.00.25</b>	A30S	4 1/2" X 1/8" X 7/8"
<b>RX123.00.25</b>	A30S	5" X 1/8" X 7/8"
<b>RX173.00.25</b>	A30S	7" X 1/8" X 7/8"



## FLAP WHEELS

#### TYPE 27 FOR STEEL & STAINLESS STEEL



<b>RX115.040Z</b>	Type 27	4-1/2" x 7/8"	40 Grit
<b>RX115.060Z</b>	Type 27	4-1/2" x 7/8"	60 Grit
<b>RX115.080Z</b>	Type 27	4-1/2" x 7/8"	80 Grit
<b>RX125.040Z</b>	Type 27	5" x 7/8"	40 Grit
<b>RX125.060Z</b>	Type 27	5" x 7/8"	60 Grit
<b>RX125.080Z</b>	Type 27	5" x 7/8"	80 Grit
<b>RX180.040Z</b>	Type 27	7" x 7/8"	40 Grit
<b>RX180.060Z</b>	Type 27	7" x 7/8"	60 Grit
<b>RX180.080Z</b>	Type 27	7" x 7/8"	80 Grit

### FAST CUT WHEELS

#### TYPE 1 FOR STEEL & STAINLESS STEEL

<b>RX115.10.25</b>	20A60R	4 1/2" X .045" X 7/8"
<b>RX125.10.25</b>	20A60R	5" X .045" X 7/8"
<b>RX150.10.25</b>	20A60R	6" X .045" X 7/8"



### CUT OFF WHEELS

#### TYPE 1 FOR STEEL

<b>RX230.20.25</b>	A46R	9" X 5/64" X 7/8"
<b>RX303.03.25</b>	A24S	12" X 1/8" X 1"
<b>RX354.28.25</b>	A36S	14" X 1/8" X 1"



## TIG ROD CANISTER

**PWEC36**  
Canister for  
36" to 39"  
TIG Rods



### ELECTRODE CANISTERS

#### Powerweld Electrode Canisters

Powerweld electrode canisters are designed to protect your welding electrodes during transport and storage. Sturdy impact resistant construction holds heated electrodes up to 250°F (121°C). Square sided to stop from rolling around during transportation. Rubber O-ring makes a tight seal and resists moisture from entering the canister. Shape design and coarse thread make removal of the cap easy when wearing welding gloves. Holds up to 10lb (4.54kg) of electrode. Available for 14" (350mm) and 18" (450mm) electrodes. Every canister comes with a carry strap!

<b>PWEC14</b>	<b>PWEC18</b>
Powerweld Electrode Canister for 14" electrodes	Powerweld Electrode Canister for 18" electrodes

## TOOLS & ACCESSORIES

### INSPECTION MIRRORS



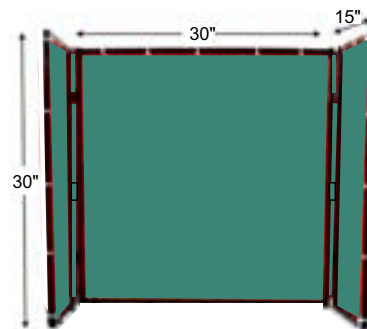
Powerweld inspection mirrors are available in several shapes and sizes to suit any inspection task. All models feature a telescoping handle and multi-angle ball joint to provide maximum accessibility. Large sizes also feature a soft and comfortably contoured non-slip handle.

Item	Description	Metric Size	Telescoping Spec Imp.	Telescoping Spec Metric.
PWB-2	Inspection Mirror oval 1" x 2" telescoping	25mm x 50mm	8" to 24"	205mm to 610mm
PWC-2	Inspection Mirror round 2" telescoping	50mm	9-1/2" to 28-3/4"	243mm to 722mm
PWE-2	Inspection Mirror round 1-1/4" telescoping	30mm	7-3/8" to 23-3/8"	189mm to 594mm
PWK-2	Inspection Mirror rectangle 2" x 4" telescoping	50mm x 100mm	11-3/8" to 30-1/2"	289mm to 765mm
PWS-2	Inspection Mirror round 3-1/4" telescoping	85mm	10-1/2" to 29-1/2"	266mm to 740mm

### PORTABLE WELDING BOOTH



Welding Table with Casters  
**PW3620WTC**



Magnetic Table Top Welding Curtain - Green 30" x 30"  
**PW3030TTG**

Powerweld portable welding booth features 14 ga galvanized steel table top 36" x 20". Pull out slag tray to capture and remove post-weld materials. Four casters provide portability. Has a welded tab for grounding, plus a hook for cable management or to hang a helmet on. Weight capacity 220 lbs. Table top curtain and frame mounts securely to the table with 9 magnetic feet providing enclosed protection on 3 sides. Trans-vu green curtain measures 30" in height.

# TOOLS & ACCESSORIES

## TUNGSTEN SHARPENER



Tungsten Sharpener  
in carrying case

**PW32000TG**



Replacement  
Tungsten  
Sharpener  
Wheel

**PW32000RW**



**PW32000TG**

The Powerweld **PW32000TG** handheld tungsten sharpening grinder provides precise preparation of tungsten electrodes. The specialized grinding fixture head is designed to accommodate 6 diameters of tungsten electrodes with the option of four precise grinding angles. Properly sharpened tungsten electrodes produce superior weld quality and reliable arc starting. PW32000TG has grinding, facing and cutting capabilities. A double-sided grinding wheel provides long term performance.

- **Input voltage:** 110V
- **Grinding angles:** 15° / 18° / 22.5° / 30°
- **Tungsten diameters:** 1.0mm, 1.6mm, 2.0mm, 2.4mm, 3.2mm, 4.0mm  
040", 1/16", 5/64", 3/32", 1/8", 5/32"



**PW32000STAND**

STAND FOR PW32000TG  
TUNGSTEN GRINDER

## CORDLESS TUNGSTEN SHARPENER



**PW18005TG**  
TUNGSTEN SHARPENER -  
CORDLESS RECHARGABLE

The Powerweld **PW18005TG** is a cordless tungsten grinder built for convenience, portability, and light-duty performance. Designed with the occasional user, DIY TIG welder, or mobile technician in mind, this economical unit delivers clean, consistent grinds wherever the job takes you. Powered by a rechargeable 8V lithium-ion battery and equipped with a durable double-sided diamond wheel, the PW18005TG offers reliable results at preferred angles of 15°, 22.5°, or 32°. Compact, user-friendly, and easy to maintain - it's the ideal solution for field work or occasional tungsten prep.



**PW18005RWK**  
REPLACEMENT  
DIAMOND WHEELS (4)  
PW18005TG





Powerweld layout and alignment tools are built for professionals who demand accuracy, durability, and ease of use on the job site. From magnetic levels and centering heads to flange aligners and burning guides, each tool is constructed with high-quality materials and designed to deliver consistent, reliable performance. Whether used for pipe fitting, layout, or alignment applications, Powerweld tools provide the precision and functionality needed to get the job done right.

## FAST FIT FLANGE PINS

Powerweld Fast Fit Flange Pins provide fast, precise alignment of pipe flanges during fitup. Machined from high-strength steel with a tapered guide design, these pins deliver a secure and repeatable centerline every time. Each pin features a knurled handle for improved grip and a positive-locking nut to hold the flange securely in position during tacking or welding.

### Key Features:

- Hardened steel resists wear and maintains strength under load
- Acme threads for quick, accurate alignment of pipe flanges
- Knurled grip for secure handling, even with gloves
- Quick release button allow the pins to be removed quickly and easily when the job is done
- Designed for use with flange holes from 5/8" to 1-5/8" (16 mm to 42 mm), maximum flange thickness of 6-3/8" (162 mm)



**PWPTCHS**

CENTERING HEAD STANDARD  
MAGNETIC 1/2"-4" PIPE



**PWPTCHL**

CENTERING HEAD LARGE  
MAGNETIC 1" PIPE AND UP

## MAGNETIC CENTERING HEADS

Standard and large magnetic centering heads make it easy to mark centers on pipe from 1/2" in diameter and larger. Powerweld centering heads are crafted from lightweight, durable aluminum and feature a laser etched 180-degree adjustable dial and level marked in 2.5-degree increments and a hardened steel punch. Equipped with strong neodymium magnets, they provide secure placement on steel pipes.



**PWPTFP**

FAST-FIT FLANGE PINS SET (2)

## POWERWELD RADIUS MARKERS

- PWPTRM10** RADIUS MARKER SMALL UP TO 10" CIRCLE
- PWPTRM24** RADIUS MARKER MEDIUM UP TO 24" CIRCLE
- PWPTRM48** RADIUS MARKER LARGE UP TO 48" CIRCLE



Powerweld radius markers are made from durable aluminum and designed for fast, accurate layout work on pipe and flat surfaces. Each arm features a soapstone holder and adjustable tension joint for smooth, consistent marking. The small model marks circles up to 10" (254 mm) in diameter, the medium up to 24" (610 mm), and the large up to 48" (1219 mm).



**PWPT12L**  
LEVEL UNIVERSAL  
MAGNETIC 12"

## 12" MAGNETIC LEVEL

The Powerweld magnetic level combines lightweight, durable aluminum construction with precision and versatility. It features laser-etched imperial and metric scales for measurements up to 12" (300 mm). Designed with fixed horizontal and vertical levels, plus a 180-degree adjustable dial marked in 2.5-degree increments for added functionality. Equipped with strong neodymium magnets, it ensures secure placement on any steel surface.

### FLANGE ALIGNER

The Powerweld flange aligner makes flange fit ups quick and easy. It is made from robust steel and is hard anodized for optimal strength and lasting performance. The flange pins are threaded for ease of use. This unit can be safely used with flange holes from 1/2" to 1-7/16" diameter x 2-1/2"

**PWPTFA1**  
FLANGE ALIGNER  
DUAL PIN WITH LEVEL



**PWPTMBG24**  
BURNING GUIDE  
MAGNETIC 24"

### 24" MAGNETIC BURNING GUIDE

The Powerweld straight burning guide is constructed from durable cast aluminum and features three embedded neodymium magnets for consistent, precise straight cuts. Four attachment holes allow additional blades to be added, extending the length of

### REPLACEMENT DIAL AND LEVEL

Machined aluminum dial with a liquid bubble vial for precise measurements. Compatible with Powerweld centering heads and the 12" magnetic level.

**PWPTRDL**  
DIAL AND LEVEL  
REPLACEMENT KIT



### HIGH-TEMPERATURE PIPE WRAP AROUNDS

Powerweld pipe wrap arounds are a simple and cost-effective solution for accurately marking straight lines around pipes or creating accurate edges for welding and cutting. All Powerweld wraps are made from a flexible and durable gasket material that is asbestos free and can withstand temperatures up to 550°F (287°C). All 5 stock sizes are printed with both metric and imperial measurement scales, pitch chart and tangent chart. Additional instructions for layouts of elbow and other fittings are also printed on the product itself.

**PWPTWA12** WRAP AROUND 3.88" X 4' GREY - UP TO 12" PIPE

**PWPTWA18** WRAP AROUND 3.88" X 6' GREY - UP TO 18" PIPE

**PWPTWA22** WRAP AROUND 5" X 7' GREY - UP TO 22" PIPE

**PWPTWA28** WRAP AROUND 5" X 9' GREY - UP TO 28" PIPE

**PWPTWA48** WRAP AROUND 7" X 15' GREY - UP TO 48" PIPE

# TOOLS & ACCESSORIES

## PIPELINE WELDING CLAMPS

All Steel Construction - Powder Coated Finish-Stainless Steel Contact Points & Alignment Screw

ITEM	Pipe Dia Range (in)	Pipe Dia Range (mm)	Wt (lbs)	Wt (kg)
<b>PWC125SS</b>	1" - 2.5"	25mm - 63mm	4.6 lbs	2.1 kg
<b>PWC26SS</b>	2" - 6"	50mm - 152mm	9.25 lbs	4.2 kg
<b>PWC514SS</b>	5" - 14"	127mm - 355mm	18.75 lbs	8.5 kg



Clamp Pipe Welding  
1" - 2.5" Pipe

**PWC125SS**



Clamp Pipe Welding  
2" - 6" Pipe

**PWC26SS**



Clamp Pipe Welding  
5" - 14" Pipe

**PWC514SS**

## TIG TORCH ADAPTORS



**PWTA1820**

50mm standard Dinse® adaptor with water side hose for use with 18-series and 20-series TIG torches



**PWTA917GT**

50mm standard Dinse® adaptor with gas-through for use with 9-series and 17-series TIG torches



**PWTA26**

50mm standard Dinse® adaptor with gas side hose for use with 26-series TIG torches



**PWTA917**

50mm standard Dinse® adaptor with gas side hose for use with 9-series and 17-series TIG torches



**PWTA26GT**

50mm standard Dinse® adaptor with gas-through for use with 26-series TIG torches



**PWTA917GT25**

25mm standard Dinse® adaptor with gas side hose for use with 9-series and 17-series TIG torches

## WELDING UMBRELLA



**PWUB75**

Powerweld Welding Umbrella

- 7.5' wide Welding Umbrella
- Flexible Fiberglass Ribs
- Adjustable Tilt
- Tripod Base Stand Included
- Flame Resistant Polyester Material

**A**



**AQU** The Purge Dam Specialists

**B**



**BER** MIG Guns, Parts & Welding Accessories

**C**



**CON** Contour Layout, Measuring Tools



**CMX** Welders Caps



**CAM** Electrical Plugs, Receptacles



**CYL** High Pressure, Low Pressure Cylinders

**D**



**DIR** Welding Cable



**DLR** Welding Cable Reels



**DYN** Industrial Chemicals, Lens, Faceshields

**E**



**EMP** Levels, Squares & Tape Measures



**EVO** Power Tools, Blades & Cutters

**F**



**FNW** Marking and Layout Tools



**FLE** Cutting, Grinding and Sanding Products

**G**



**GTC** Manufacturer of High Quality Gas Apparatus



**GST** Welding & Cutting Tips & Gas Apparatus

**J**



**KCP** Safety Products, Welding Accessories



**KLP** Waterless Hand Cleaners

**K**



**KCI** Chemicals For The Welding Industry



**KOM** Hand Tools & Tape Measures

**M**



**MAG** Nondestructive Testing Products



**MSW** Switchable Magnetic Technology



**MKL** Industrial Markers, Chemicals, Fluxes, Marking/Layout Tools



**MET** Power Tools



**MOT** Plasma Air Filters, Welding Accessories

**N**



**NWP** Pipe-Pro Guides

## O



**OCC** Safety Products



**OET** Clamps, Couplings, Accessories



**OLY** Industrial Cable & Hose Measurers



**OSP** Pipe Guides



**OPT** Helmets & Safety Products



**OSB** Industrial Brushes

## P



**PAR** MIG Guns, TIG Torches, Plasma Torches, MIG, TIG Plasma Parts



**PET** Fluxes - Brazing and Welding Fluxes



**PHX** Portable, Shop Electro Flux Ovens



**POW** Gas & Arc Equipment, Safety, Cable, Welders, Tungsten, Alloys, Chemicals, Carts, Hose Reels

## R



**RAY** Batteries, Portable Power & Lights



**REF** Abrasives, Diamond Discs



**ROD** Welding Rod Protection

## S



**FUL** SHURLITE Spark Lighters, Renewal Flints



**SOL** Solar Flux For Welds On Stainless Steel & High Nickel Alloys



**SAF** Cylinder Carts, Hand Trucks



**SEL** Safety Products



**SUP** Compressed Gas Fittings, Assemblies



**SPF** SuperFlash Flash Arrestors

## T



**TEM** Temperature Indicator Products

## U



**ULM** Inspection Mirrors, Magnetic Pick-Up Tools

## W



**WLD** Welding and Industrial Apparel



**WDA** Welding Chemicals



**WES** Compressed Gas Fittings, Assemblies



**WSC** Safety Screens



**WYP** Tip Cleaning Products

**PROFESSIONALS PREFER POWERWELD**

**QUALITY  
WELDING,  
SAFETY AND  
INDUSTRIAL  
SUPPLIES**

**POWERWELD®**

QUALITY WELDING, SAFETY & INDUSTRIAL SUPPLIES SINCE 1983

Powerweld products are available from:

CATALOGUE # 0326